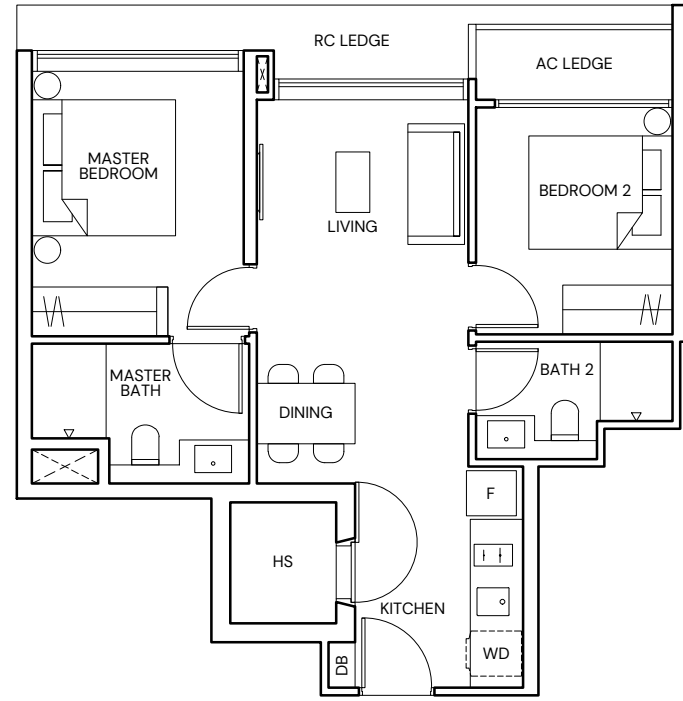


# TYPE B1

**2 BEDROOM**  
58 SQM/ 624 SQFT

**BLOCK 18B**  
#01-17 TO #03-17  
#01-24\* TO #03-24\*



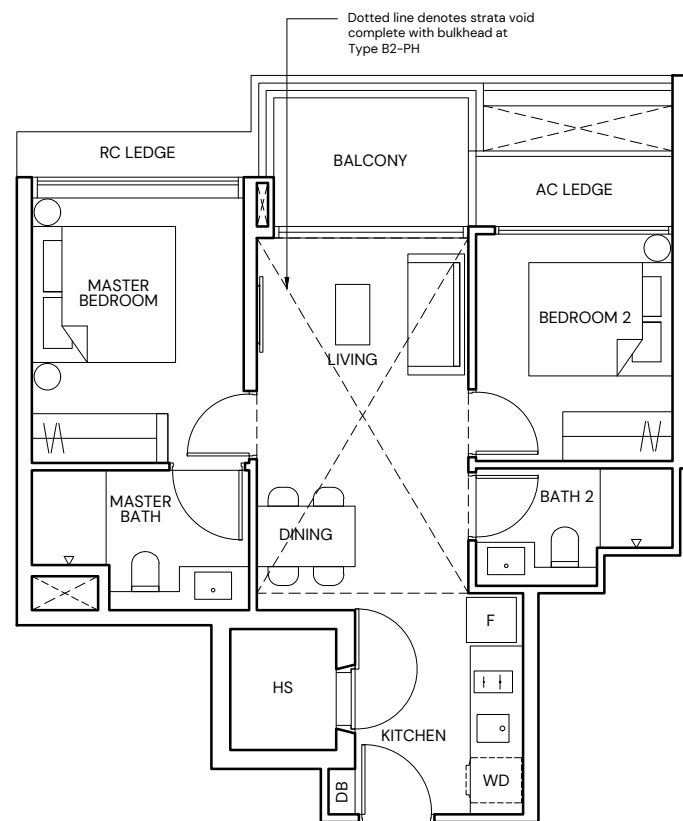
# TYPE B2

**2 BEDROOM**  
63 SQM/ 678 SQFT

**BLOCK 18**  
#01-01 TO #04-01  
#01-08\* TO #04-08\*

**BLOCK 18A**  
#01-09 TO #04-09  
#01-16\* TO #04-16\*

**BLOCK 18B**  
#04-17  
#04-24\*



# TYPE B2-PH

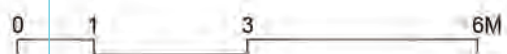
**2 BEDROOM**  
78 SQM/ 840 SQFT  
(INCLUSIVE OF 15 SQM STRATA VOID)

**BLOCK 18**  
#05-01  
#05-08\*

**BLOCK 18A**  
#05-09  
#05-16\*

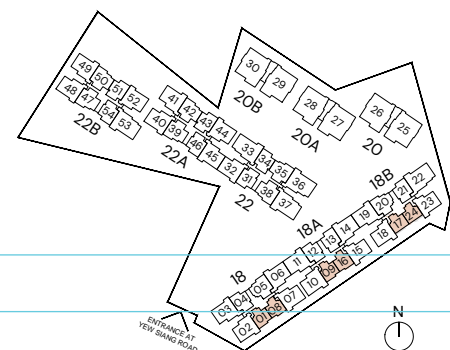
**BLOCK 18B**  
#05-17  
#05-24\*

<b>LEGEND</b>			
F	FRIDGE	AC	AIR-CONDITIONER
WD	WASHER DRYER COMBO	RC	REINFORCED CONCRETE
HS	HOUSEHOLD SHELTER		(EXCLUDED FROM STRATA AREA)
DB	DISTRIBUTION BOARD	∞	VOID SPACE
*	MIRRORED UNIT		(EXCLUDED FROM STRATA AREA)



ALL PLANS ARE SUBJECT TO CHANGES BY THE RELEVANT AUTHORITIES.  
MEASUREMENTS ARE APPROXIMATE ONLY AND SUBJECT TO FINAL SURVEY.  
INFORMATION ACCURATE AT POINT OF PRINTING.

BP-NO.-A1716-00007-2021-BP01-DATED 23/12/2022



# TYPE B3

**2 BEDROOM + STUDY**  
75 SQM/ 807 SQFT

**BLOCK 18**  
#01-04\* TO #04-04\*

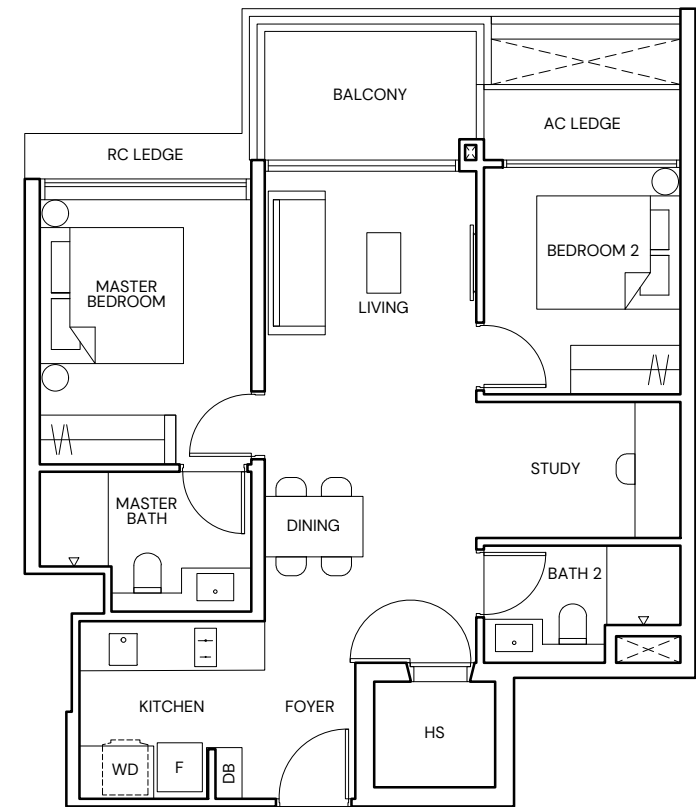
**BLOCK 18A**  
#01-12\* TO #04-12\*  
#01-13 TO #04-13

**BLOCK 18B**  
#01-21 TO #04-21

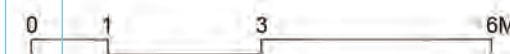
**BLOCK 22**  
#01-31 TO #04-31  
#01-34\* TO #04-34\*

**BLOCK 22A**  
#01-43 TO #04-43  
#01-46\* TO #04-46\*

**BLOCK 22B**  
#01-51 TO #04-51  
#01-54\* TO #04-54\*

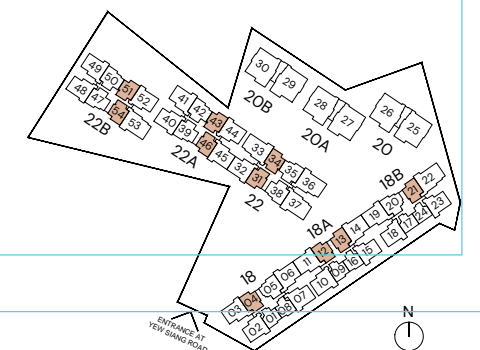


<b>LEGEND</b>			
F	FRIDGE	AC	AIR-CONDITIONER
WD	WASHER DRYER COMBO	RC	REINFORCED CONCRETE
HS	HOUSEHOLD SHELTER		(EXCLUDED FROM STRATA AREA)
DB	DISTRIBUTION BOARD	∞	VOID SPACE
*	MIRRORED UNIT		(EXCLUDED FROM STRATA AREA)



ALL PLANS ARE SUBJECT TO CHANGES BY THE RELEVANT AUTHORITIES.  
MEASUREMENTS ARE APPROXIMATE ONLY AND SUBJECT TO FINAL SURVEY.  
INFORMATION ACCURATE AT POINT OF PRINTING.

BP-NO.-A1716-00007-2021-BP01-DATED 23/12/2022

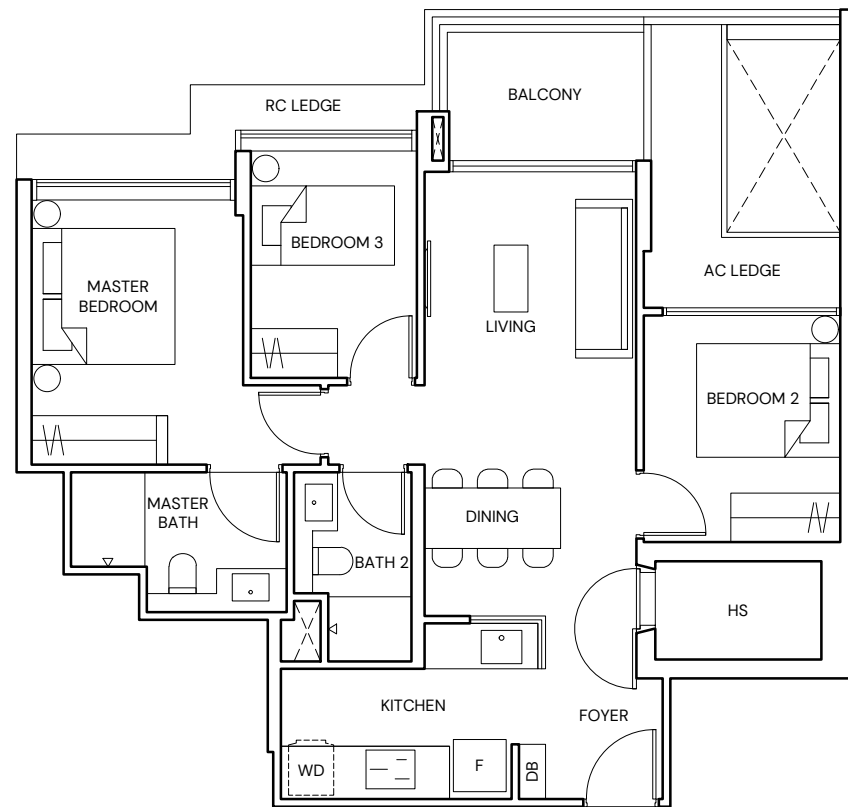


# TYPE C1

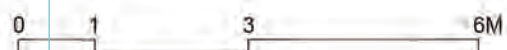
**3 BEDROOM**  
84 SQM/ 904 SQFT

**BLOCK 18**  
#01-05 TO #04-05

**BLOCK 18B**  
#01-20\* TO #04-20\*

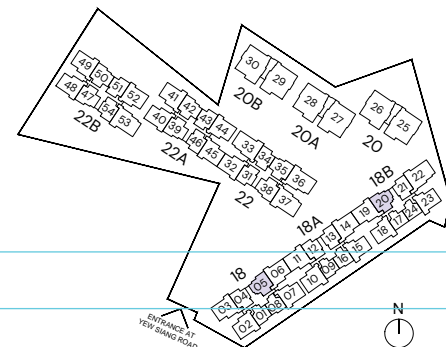


- LEGEND**
- |    |                                                  |    |                                                    |
|----|--------------------------------------------------|----|----------------------------------------------------|
| F  | FRIDGE                                           | AC | AIR-CONDITIONER                                    |
| WD | WASHER DRYER COMBO                               | RC | REINFORCED CONCRETE<br>(EXCLUDED FROM STRATA AREA) |
| HS | HOUSEHOLD SHELTER<br>(EXCLUDED FROM STRATA AREA) | ∞  | VOID SPACE<br>(EXCLUDED FROM STRATA AREA)          |
| DB | DISTRIBUTION BOARD                               |    |                                                    |
| *  | MIRRORED UNIT                                    |    |                                                    |



ALL PLANS ARE SUBJECT TO CHANGES BY THE RELEVANT AUTHORITIES.  
MEASUREMENTS ARE APPROXIMATE ONLY AND SUBJECT TO FINAL SURVEY.  
INFORMATION ACCURATE AT POINT OF PRINTING.

BP-NO--A1716-00007-2021-BP01-DATED 23/12/2022



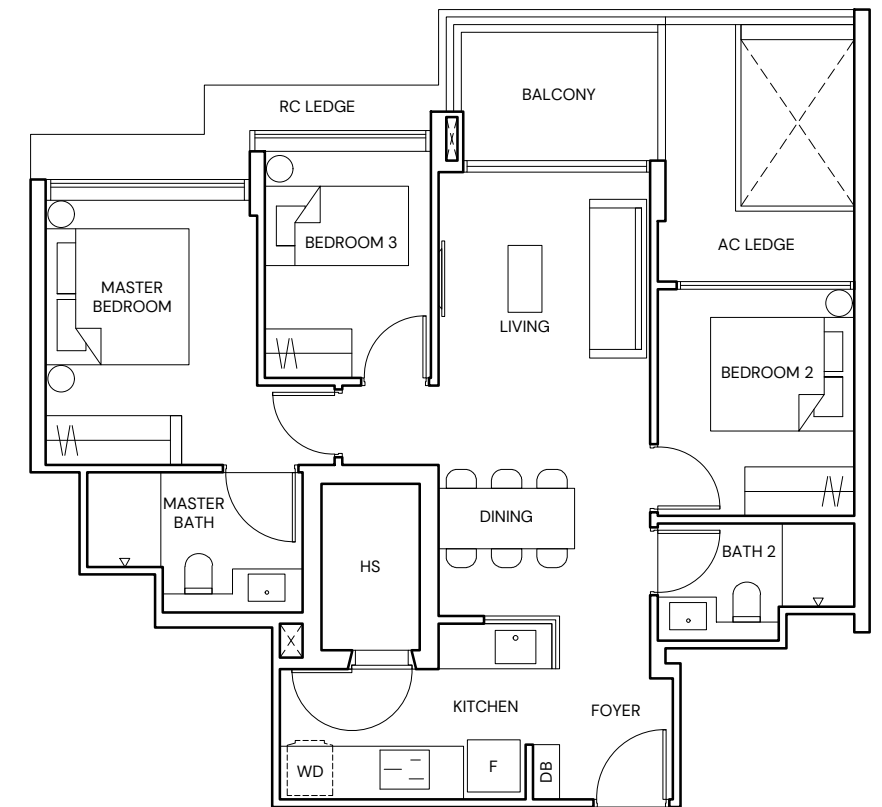
# TYPE C2

**3 BEDROOM**  
84 SQM/ 904 SQFT

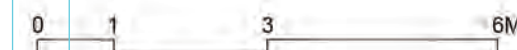
**BLOCK 22**  
#01-35 TO #04-35  
#01-38\* TO #04-38\*

**BLOCK 22A**  
#01-39 TO #04-39  
#01-42\* TO #04-42\*

**BLOCK 22B**  
#01-47 TO #04-47  
#01-50\* TO #04-50\*

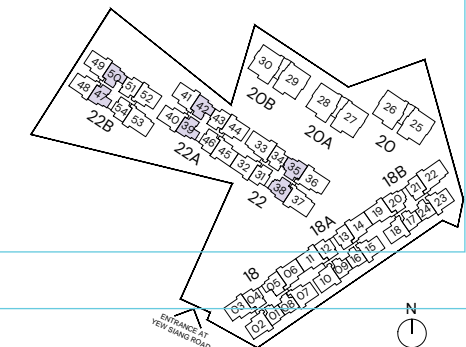


- LEGEND**
- |    |                                                  |    |                                                    |
|----|--------------------------------------------------|----|----------------------------------------------------|
| F  | FRIDGE                                           | AC | AIR-CONDITIONER                                    |
| WD | WASHER DRYER COMBO                               | RC | REINFORCED CONCRETE<br>(EXCLUDED FROM STRATA AREA) |
| HS | HOUSEHOLD SHELTER<br>(EXCLUDED FROM STRATA AREA) | ∞  | VOID SPACE<br>(EXCLUDED FROM STRATA AREA)          |
| DB | DISTRIBUTION BOARD                               |    |                                                    |
| *  | MIRRORED UNIT                                    |    |                                                    |



ALL PLANS ARE SUBJECT TO CHANGES BY THE RELEVANT AUTHORITIES.  
MEASUREMENTS ARE APPROXIMATE ONLY AND SUBJECT TO FINAL SURVEY.  
INFORMATION ACCURATE AT POINT OF PRINTING.

BP-NO--A1716-00007-2021-BP01-DATED 23/12/2022

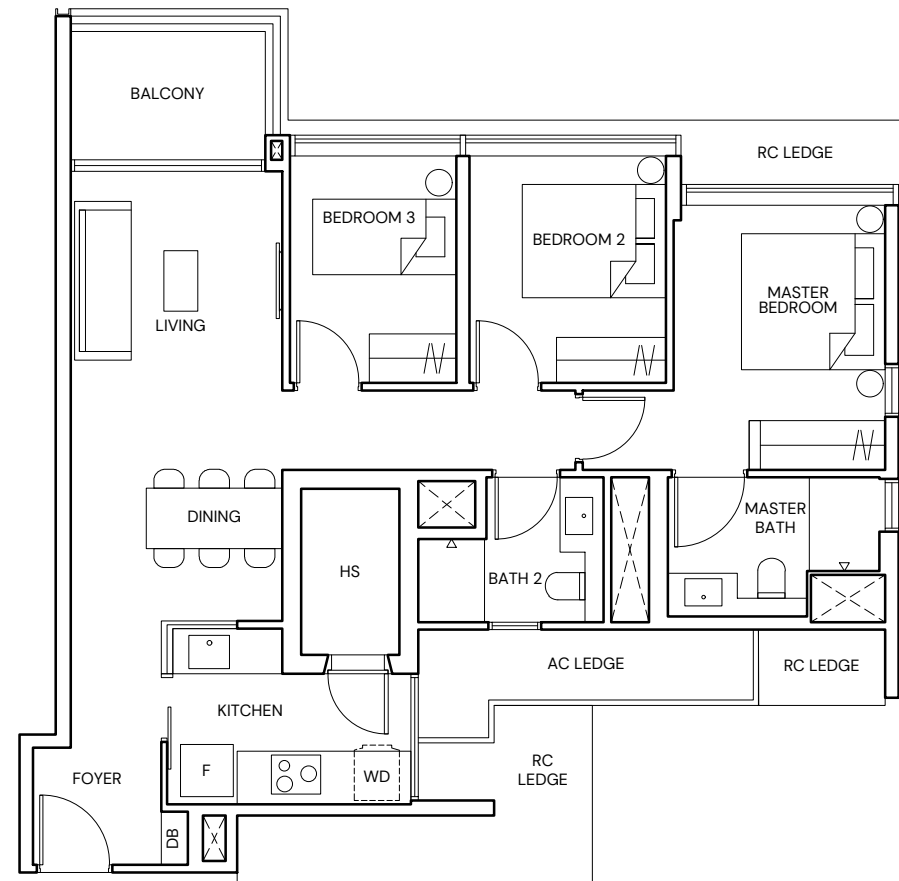


# TYPE C3

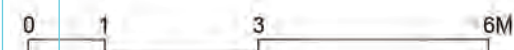
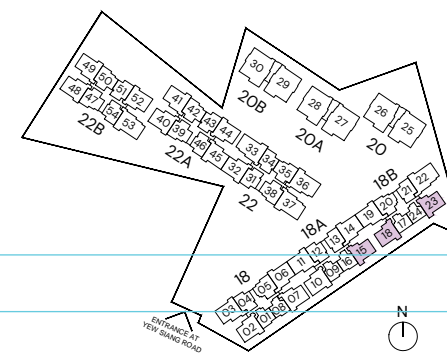
**3 BEDROOM**  
90 SQM/ 969 SQFT

**BLOCK 18A**  
#01-15 TO #04-15

**BLOCK 18B**  
#01-18\* TO #04-18\*  
#01-23 TO #04-23



- LEGEND**
- |    |                                                  |    |                                                    |
|----|--------------------------------------------------|----|----------------------------------------------------|
| F  | FRIDGE                                           | AC | AIR-CONDITIONER                                    |
| WD | WASHER DRYER COMBO                               | RC | REINFORCED CONCRETE<br>(EXCLUDED FROM STRATA AREA) |
| HS | HOUSEHOLD SHELTER<br>(EXCLUDED FROM STRATA AREA) | ◻  | VOID SPACE<br>(EXCLUDED FROM STRATA AREA)          |
| DB | DISTRIBUTION BOARD                               |    |                                                    |
| *  | MIRRORED UNIT                                    |    |                                                    |



ALL PLANS ARE SUBJECT TO CHANGES BY THE RELEVANT AUTHORITIES.  
MEASUREMENTS ARE APPROXIMATE ONLY AND SUBJECT TO FINAL SURVEY.  
INFORMATION ACCURATE AT POINT OF PRINTING.  
BP-NO--A1716-00007-2021-BP01-DATED 23/12/2022

# TYPE C4

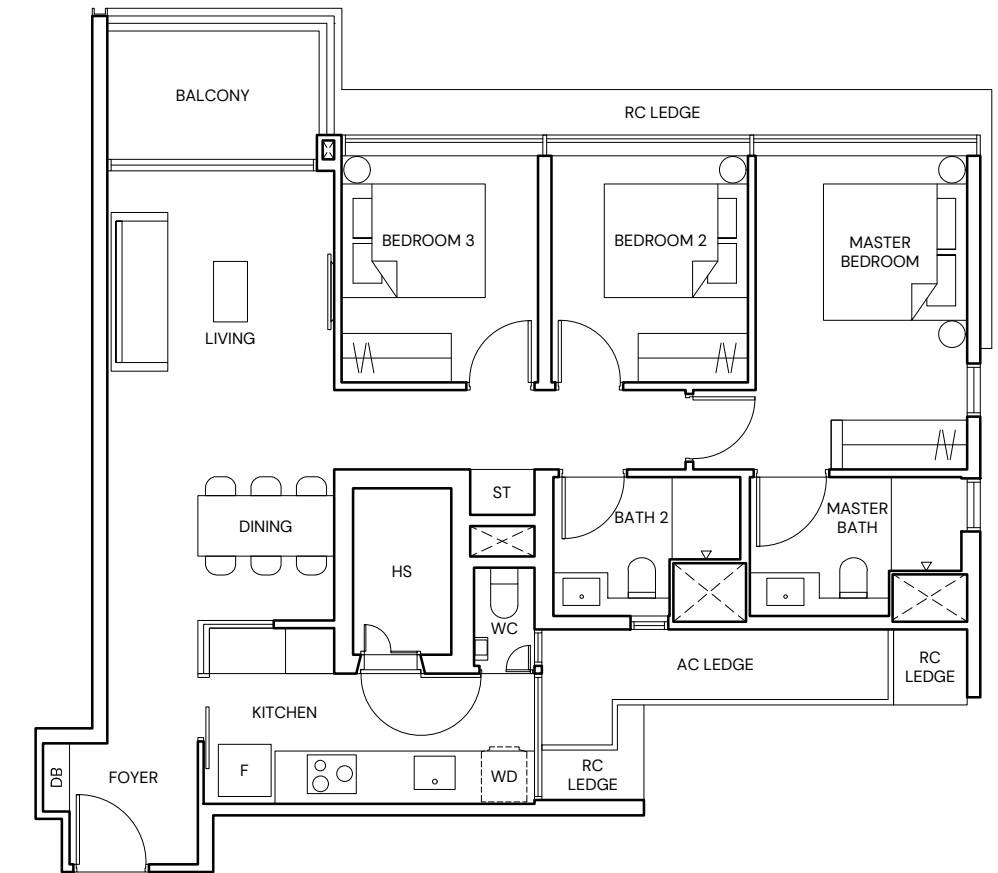
**3 BEDROOM**  
100 SQM/ 1076 SQFT

**BLOCK 18**  
#01-02 TO #04-02

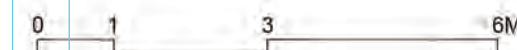
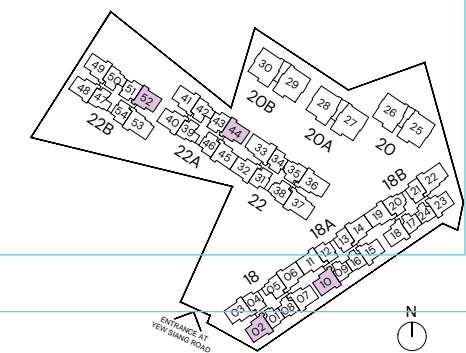
**BLOCK 18A**  
#01-10 TO #04-10

**BLOCK 22A**  
#01-44 TO #04-44

**BLOCK 22B**  
#01-52 TO #04-52



- LEGEND**
- |    |                                                  |    |                                                    |
|----|--------------------------------------------------|----|----------------------------------------------------|
| F  | FRIDGE                                           | AC | AIR-CONDITIONER                                    |
| WD | WASHER DRYER COMBO                               | RC | REINFORCED CONCRETE<br>(EXCLUDED FROM STRATA AREA) |
| HS | HOUSEHOLD SHELTER<br>(EXCLUDED FROM STRATA AREA) | ◻  | VOID SPACE<br>(EXCLUDED FROM STRATA AREA)          |
| DB | DISTRIBUTION BOARD                               |    |                                                    |
| ST | STORE                                            |    |                                                    |
| WC | WATER CLOSET                                     |    |                                                    |



ALL PLANS ARE SUBJECT TO CHANGES BY THE RELEVANT AUTHORITIES.  
MEASUREMENTS ARE APPROXIMATE ONLY AND SUBJECT TO FINAL SURVEY.  
INFORMATION ACCURATE AT POINT OF PRINTING.  
BP-NO--A1716-00007-2021-BP01-DATED 23/12/2022

# TYPE C5

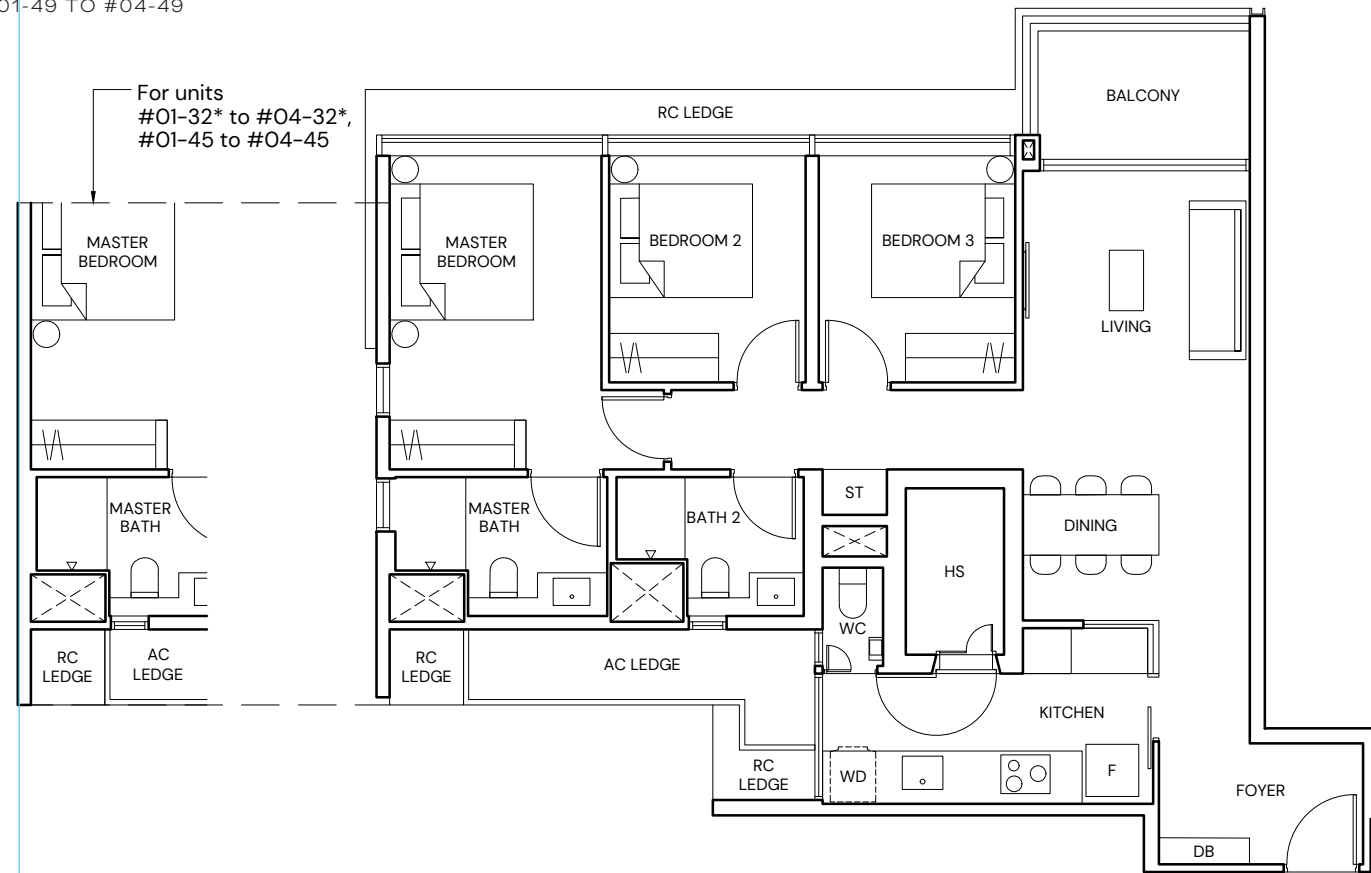
**3 BEDROOM**  
101 SQM/ 1087 SQFT

**BLOCK 18**  
#01-07 TO #04-07

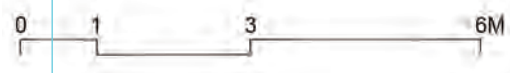
**BLOCK 22**  
#01-32\* TO #04-32\*

**BLOCK 22A**  
#01-40\* TO #04-40\*  
#01-41 TO #04-41  
#01-45 TO #04-45

**BLOCK 22B**  
#01-48\* TO #04-48\*  
#01-49 TO #04-49

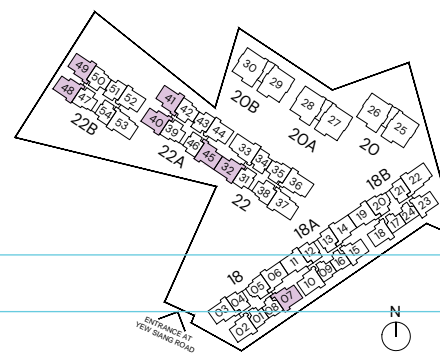


- LEGEND**
- |    |                                               |    |                                        |
|----|-----------------------------------------------|----|----------------------------------------|
| F  | FRIDGE                                        | AC | AIR-CONDITIONER                        |
| WD | WASHER DRYER COMBO                            | RC | REINFORCED CONCRETE                    |
| HS | HOUSEHOLD SHELTER (EXCLUDED FROM STRATA AREA) | ∅  | VOID SPACE (EXCLUDED FROM STRATA AREA) |
| DB | DISTRIBUTION BOARD                            |    |                                        |
| ST | STORE                                         |    |                                        |
| WC | WATER CLOSET                                  |    |                                        |
| *  | MIRRORED UNIT                                 |    |                                        |



ALL PLANS ARE SUBJECT TO CHANGES BY THE RELEVANT AUTHORITIES. MEASUREMENTS ARE APPROXIMATE ONLY AND SUBJECT TO FINAL SURVEY. INFORMATION ACCURATE AT POINT OF PRINTING.

BP-NO.-A1716-00007-2021-BP01-DATED 23/12/2022



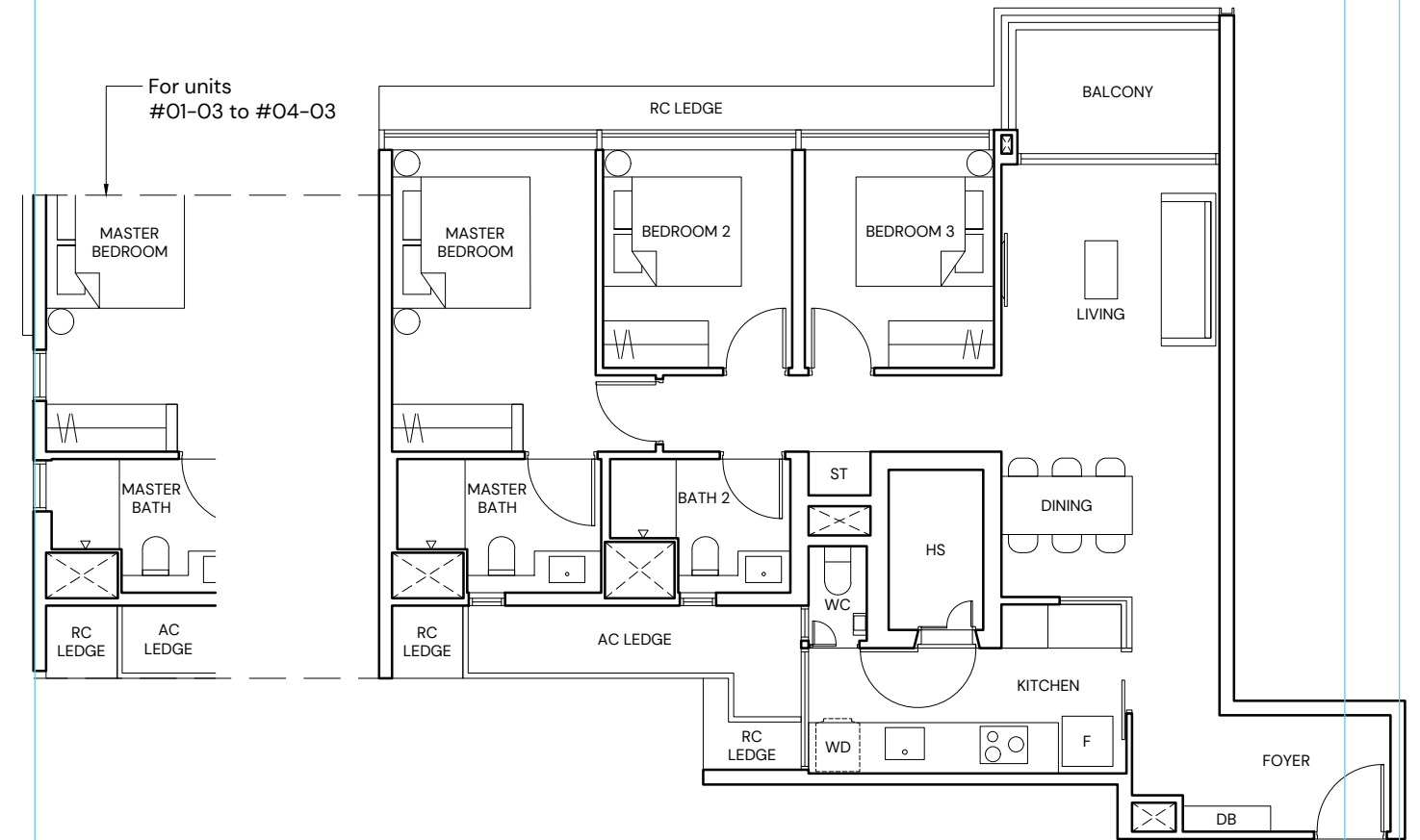
# TYPE C6

**3 BEDROOM**  
102 SQM/ 1098 SQFT

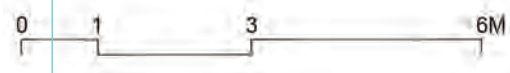
**BLOCK 18**  
#01-03 TO #04-03  
#01-06\* TO #04-06\*

**BLOCK 18A**  
#01-11 TO #04-11  
#01-14\* TO #04-14\*

**BLOCK 18B**  
#01-19 TO #04-19

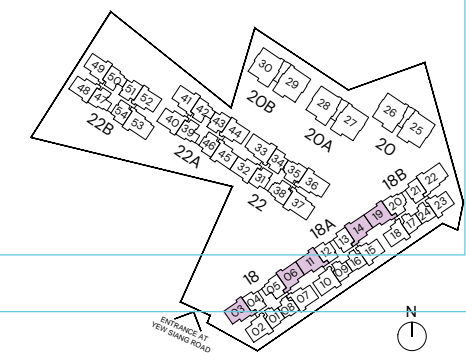


- LEGEND**
- |    |                                               |    |                                        |
|----|-----------------------------------------------|----|----------------------------------------|
| F  | FRIDGE                                        | AC | AIR-CONDITIONER                        |
| WD | WASHER DRYER COMBO                            | RC | REINFORCED CONCRETE                    |
| HS | HOUSEHOLD SHELTER (EXCLUDED FROM STRATA AREA) | ∅  | VOID SPACE (EXCLUDED FROM STRATA AREA) |
| DB | DISTRIBUTION BOARD                            |    |                                        |
| ST | STORE                                         |    |                                        |
| WC | WATER CLOSET                                  |    |                                        |
| *  | MIRRORED UNIT                                 |    |                                        |



ALL PLANS ARE SUBJECT TO CHANGES BY THE RELEVANT AUTHORITIES. MEASUREMENTS ARE APPROXIMATE ONLY AND SUBJECT TO FINAL SURVEY. INFORMATION ACCURATE AT POINT OF PRINTING.

BP-NO.-A1716-00007-2021-BP01-DATED 23/12/2022



# TYPE C7-PH

**3 BEDROOM**  
116 SQM/ 1249 SQFT  
(INCLUSIVE OF 20 SQM STRATA VOID)

**BLOCK 18**  
#05-04\*

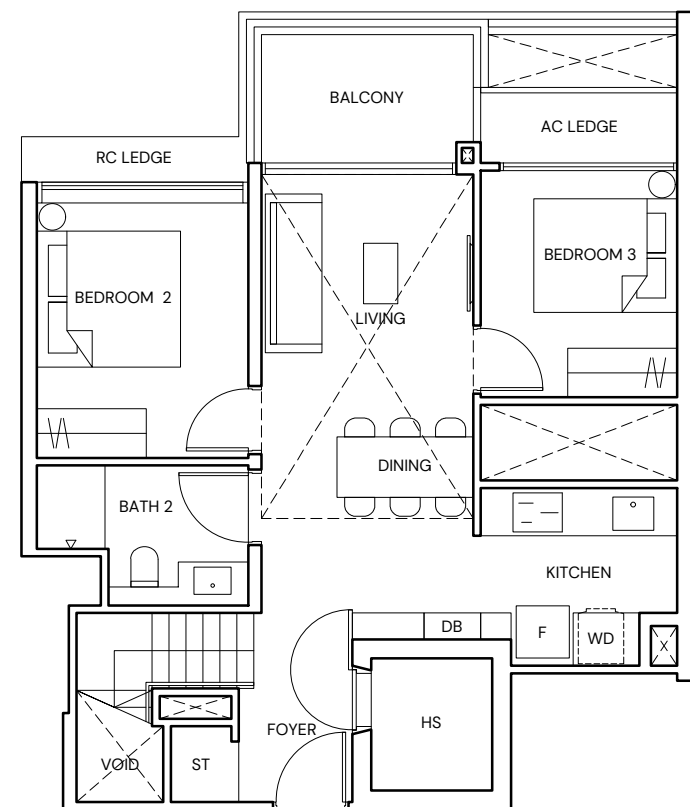
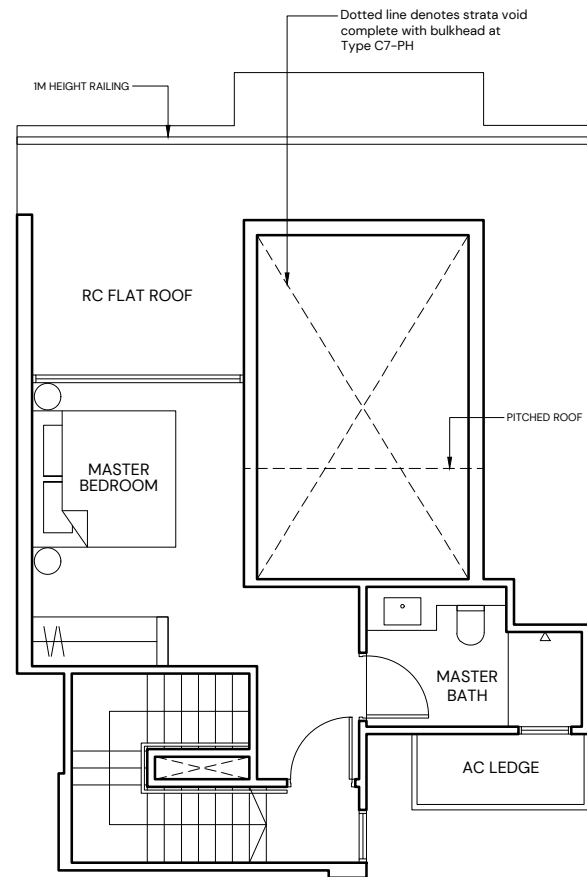
**BLOCK 18A**  
#05-12\*  
#05-13

**BLOCK 18B**  
#05-21

**BLOCK 22**  
#05-31  
#05-34\*

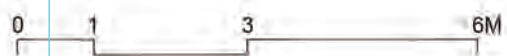
**BLOCK 22A**  
#05-43  
#05-46\*

**BLOCK 22B**  
#05-51  
#05-54\*

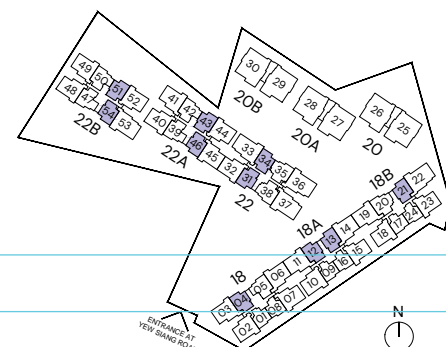


**LEGEND**

F	FRIDGE	AC	AIR-CONDITIONER
WD	WASHER DRYER COMBO	RC	REINFORCED CONCRETE (EXCLUDED FROM STRATA AREA)
HS	HOUSEHOLD SHELTER	∅	VOID SPACE (EXCLUDED FROM STRATA AREA)
DB	DISTRIBUTION BOARD		
ST	STORE		
*	MIRRORED UNIT		



ALL PLANS ARE SUBJECT TO CHANGES BY THE RELEVANT AUTHORITIES.  
MEASUREMENTS ARE APPROXIMATE ONLY AND SUBJECT TO FINAL SURVEY.  
INFORMATION ACCURATE AT POINT OF PRINTING.  
BP-NO.-A1716-00007-2021-BP01-DATED 23/12/2022

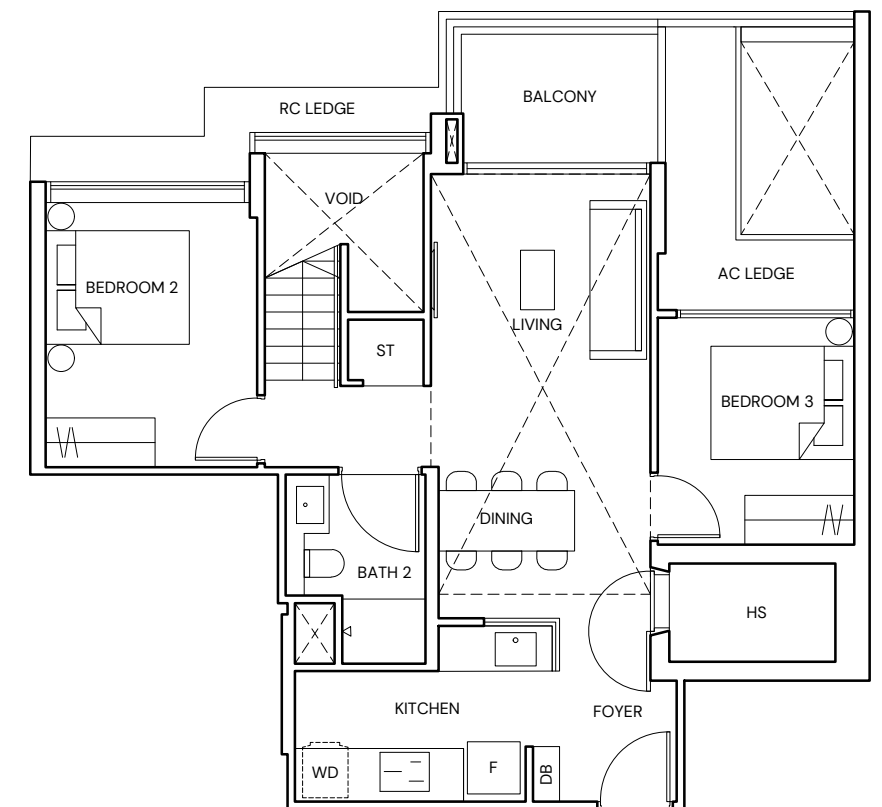
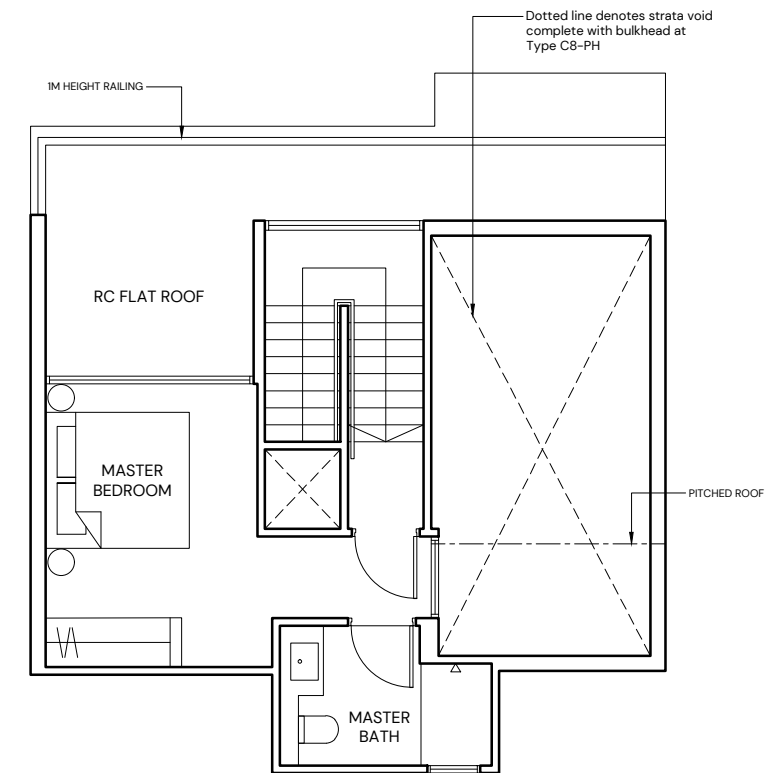


# TYPE C8-PH

**3 BEDROOM**  
124 SQM/ 1335 SQFT  
(INCLUSIVE OF 24 SQM STRATA VOID)

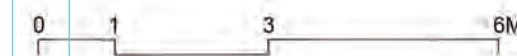
**BLOCK 18**  
#05-05

**BLOCK 18B**  
#05-20\*

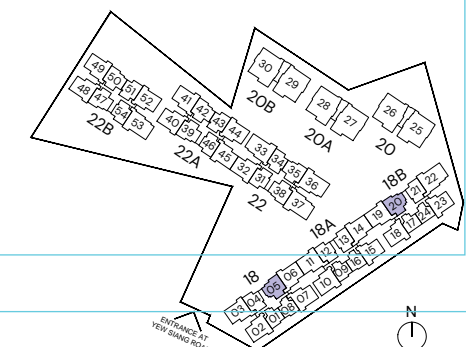


**LEGEND**

F	FRIDGE	AC	AIR-CONDITIONER
WD	WASHER DRYER COMBO	RC	REINFORCED CONCRETE (EXCLUDED FROM STRATA AREA)
HS	HOUSEHOLD SHELTER	∅	VOID SPACE (EXCLUDED FROM STRATA AREA)
DB	DISTRIBUTION BOARD		
ST	STORE		
*	MIRRORED UNIT		



ALL PLANS ARE SUBJECT TO CHANGES BY THE RELEVANT AUTHORITIES.  
MEASUREMENTS ARE APPROXIMATE ONLY AND SUBJECT TO FINAL SURVEY.  
INFORMATION ACCURATE AT POINT OF PRINTING.  
BP-NO.-A1716-00007-2021-BP01-DATED 23/12/2022



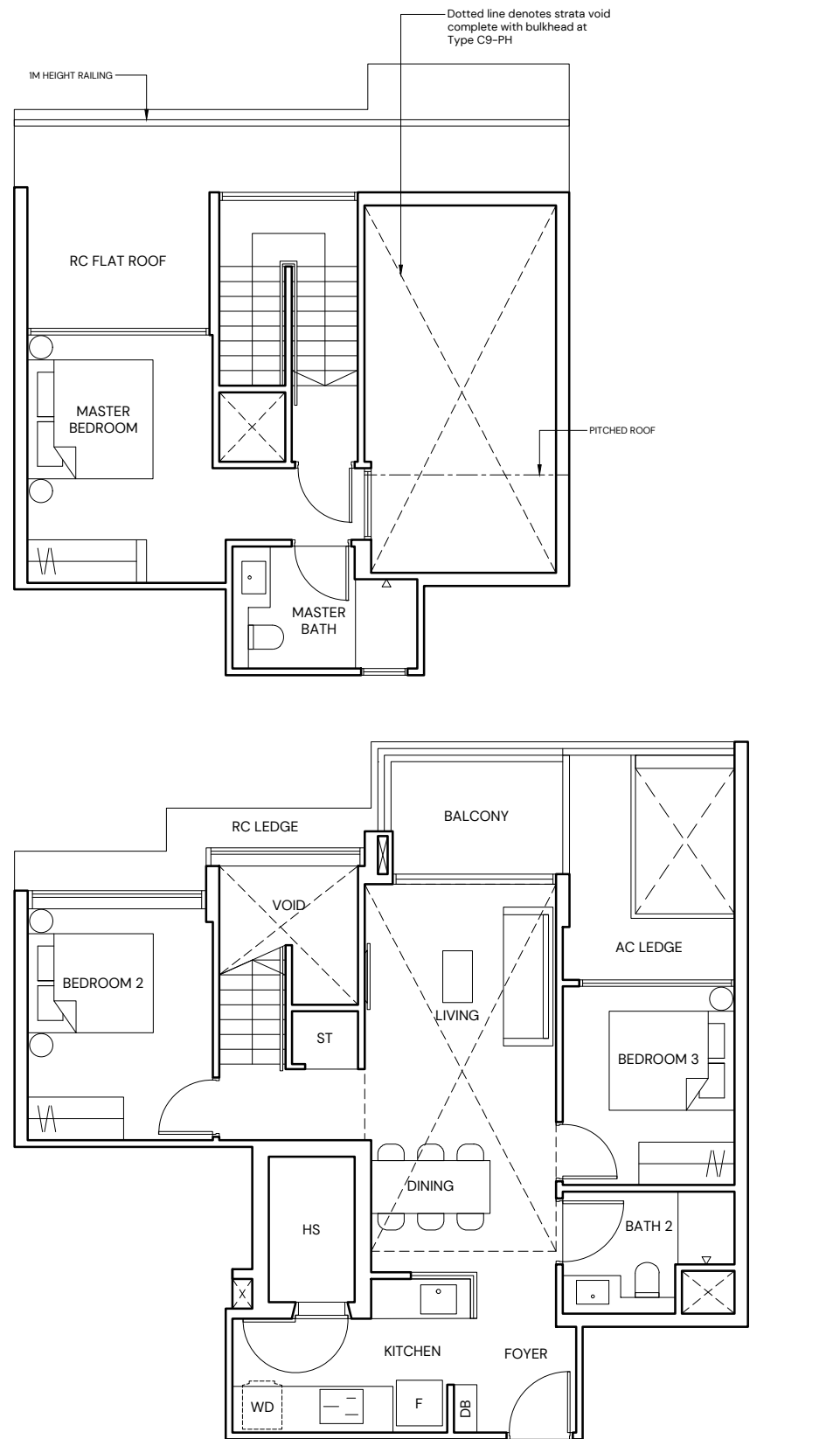
# TYPE C9-PH

**3 BEDROOM**  
124 SQM/ 1335 SQFT  
(INCLUSIVE OF 24 SQM STRATA VOID)

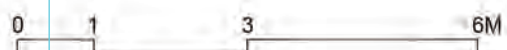
**BLOCK 22**  
#05-35  
#05-38\*

**BLOCK 22A**  
#05-39  
#05-42\*

**BLOCK 22B**  
#05-47  
#05-50\*

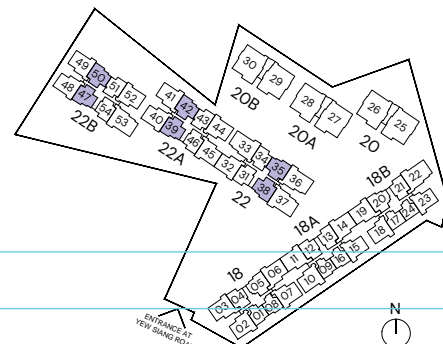


<b>LEGEND</b>	F	FRIDGE	AC	AIR-CONDITIONER
	WD	WASHER DRYER COMBO	RC	REINFORCED CONCRETE (EXCLUDED FROM STRATA AREA)
	HS	HOUSEHOLD SHELTER (EXCLUDED FROM STRATA AREA)	[ ]	VOID SPACE (EXCLUDED FROM STRATA AREA)
	DB	DISTRIBUTION BOARD		
	ST	STORE		
	*	MIRRORED UNIT		



ALL PLANS ARE SUBJECT TO CHANGES BY THE RELEVANT AUTHORITIES. MEASUREMENTS ARE APPROXIMATE ONLY AND SUBJECT TO FINAL SURVEY. INFORMATION ACCURATE AT POINT OF PRINTING.

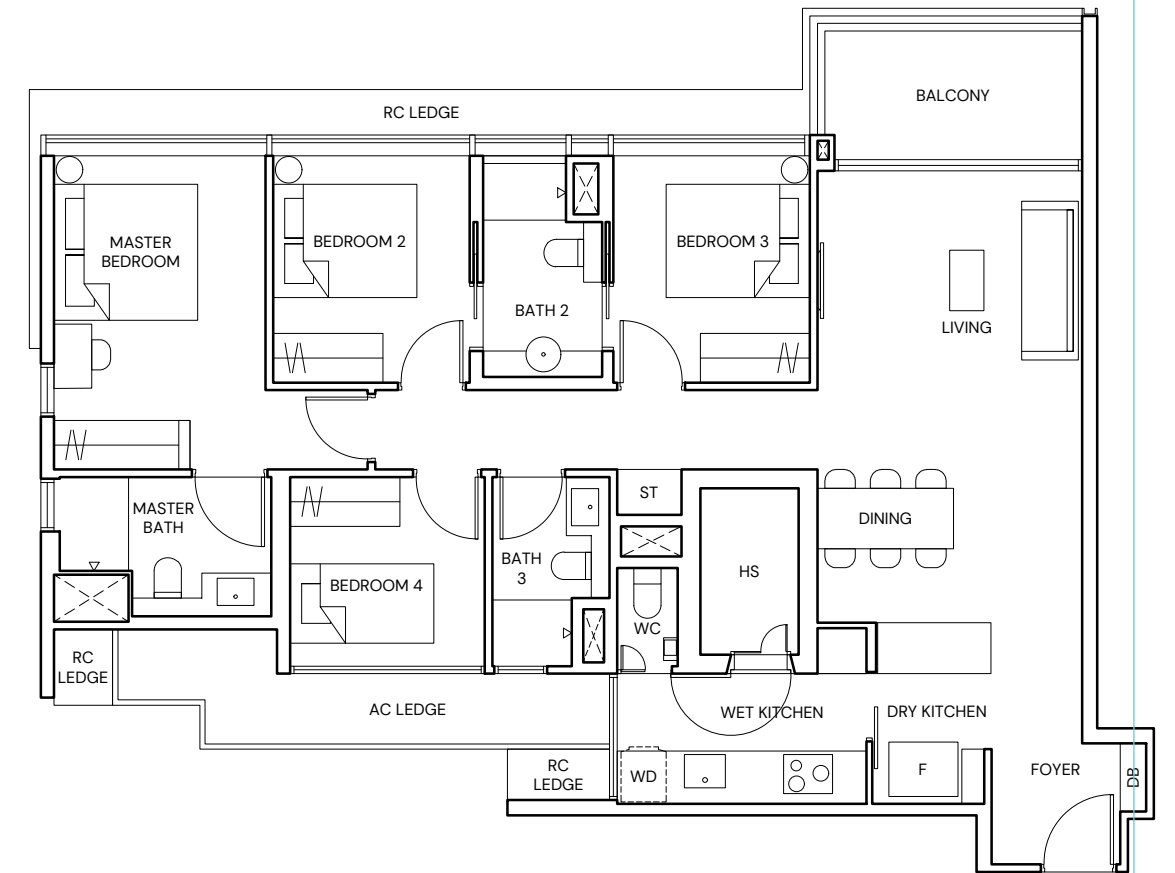
BP-NO.-A1716-00007-2021-BP01-DATED 23/12/2022



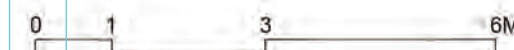
# TYPE D1

**4 BEDROOM**  
121 SQM/ 1302 SQFT

**BLOCK 22**  
#01-33 TO #04-33

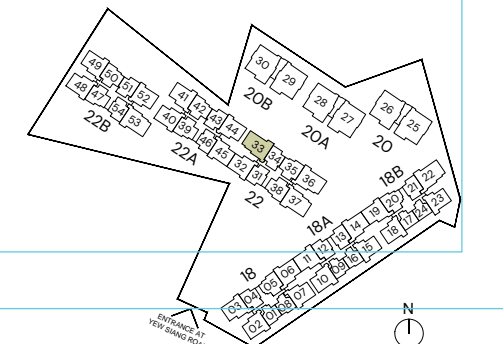


<b>LEGEND</b>	F	FRIDGE	AC	AIR-CONDITIONER
	WD	WASHER DRYER COMBO	RC	REINFORCED CONCRETE (EXCLUDED FROM STRATA AREA)
	HS	HOUSEHOLD SHELTER (EXCLUDED FROM STRATA AREA)	[ ]	VOID SPACE (EXCLUDED FROM STRATA AREA)
	DB	DISTRIBUTION BOARD		
	ST	STORE		
	WC	WATER CLOSET		



ALL PLANS ARE SUBJECT TO CHANGES BY THE RELEVANT AUTHORITIES. MEASUREMENTS ARE APPROXIMATE ONLY AND SUBJECT TO FINAL SURVEY. INFORMATION ACCURATE AT POINT OF PRINTING.

BP-NO.-A1716-00007-2021-BP01-DATED 23/12/2022

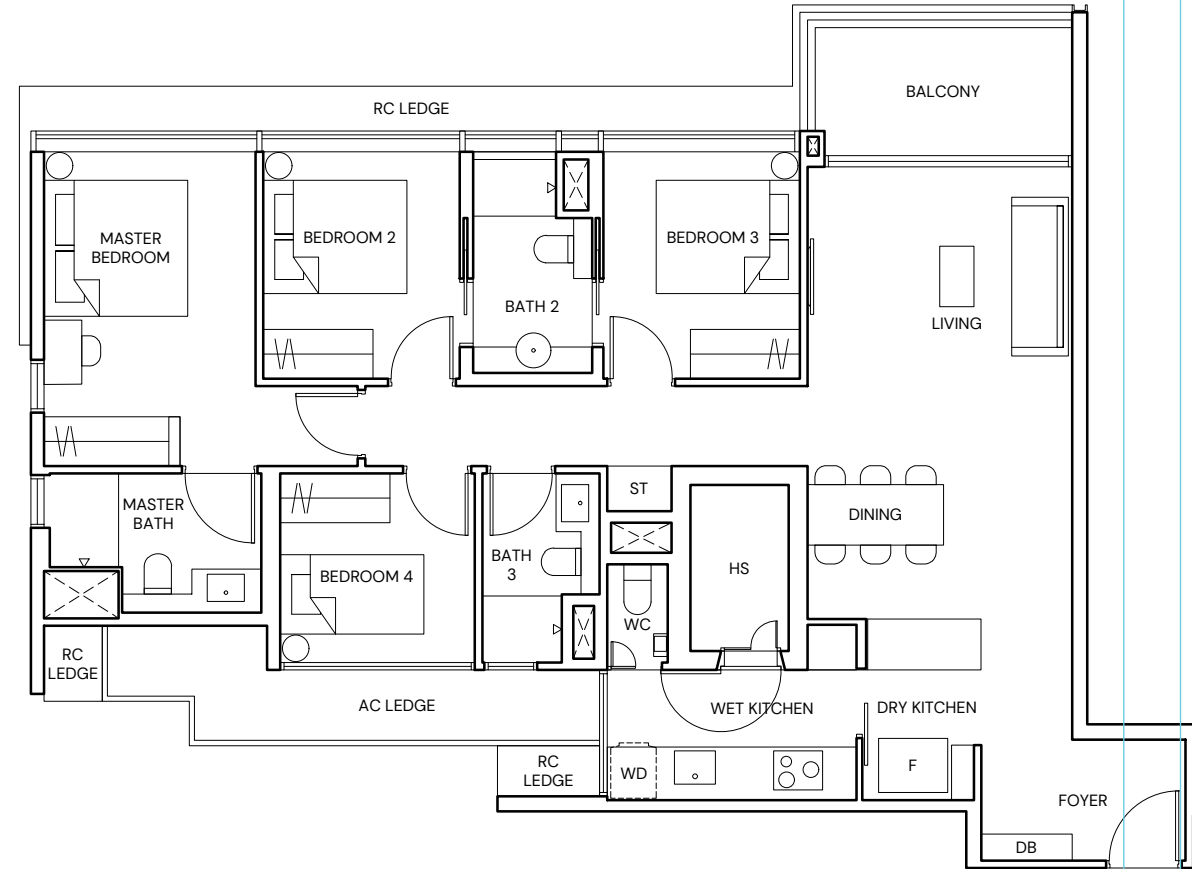


# TYPE D2

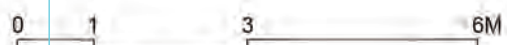
**4 BEDROOM**  
122 SQM/ 1313 SQFT

**BLOCK 22**  
#01-36\* TO #04-36\*  
#01-37 TO #04-37

**BLOCK 22B**  
#01-53 TO #04-53

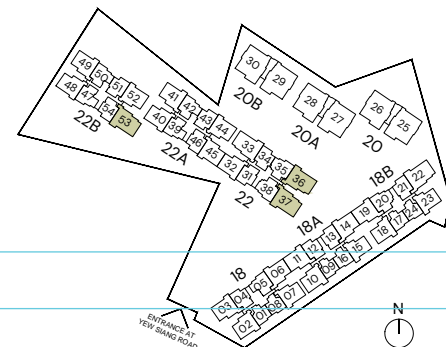


- LEGEND**
- |    |                                               |    |                                                 |
|----|-----------------------------------------------|----|-------------------------------------------------|
| F  | FRIDGE                                        | AC | AIR-CONDITIONER                                 |
| WD | WASHER DRYER COMBO                            | RC | REINFORCED CONCRETE (EXCLUDED FROM STRATA AREA) |
| HS | HOUSEHOLD SHELTER (EXCLUDED FROM STRATA AREA) | ∅  | VOID SPACE (EXCLUDED FROM STRATA AREA)          |
| DB | DISTRIBUTION BOARD                            |    |                                                 |
| ST | STORE                                         |    |                                                 |
| WC | WATER CLOSET                                  |    |                                                 |
| *  | MIRRORED UNIT                                 |    |                                                 |



ALL PLANS ARE SUBJECT TO CHANGES BY THE RELEVANT AUTHORITIES.  
MEASUREMENTS ARE APPROXIMATE ONLY AND SUBJECT TO FINAL SURVEY.  
INFORMATION ACCURATE AT POINT OF PRINTING.

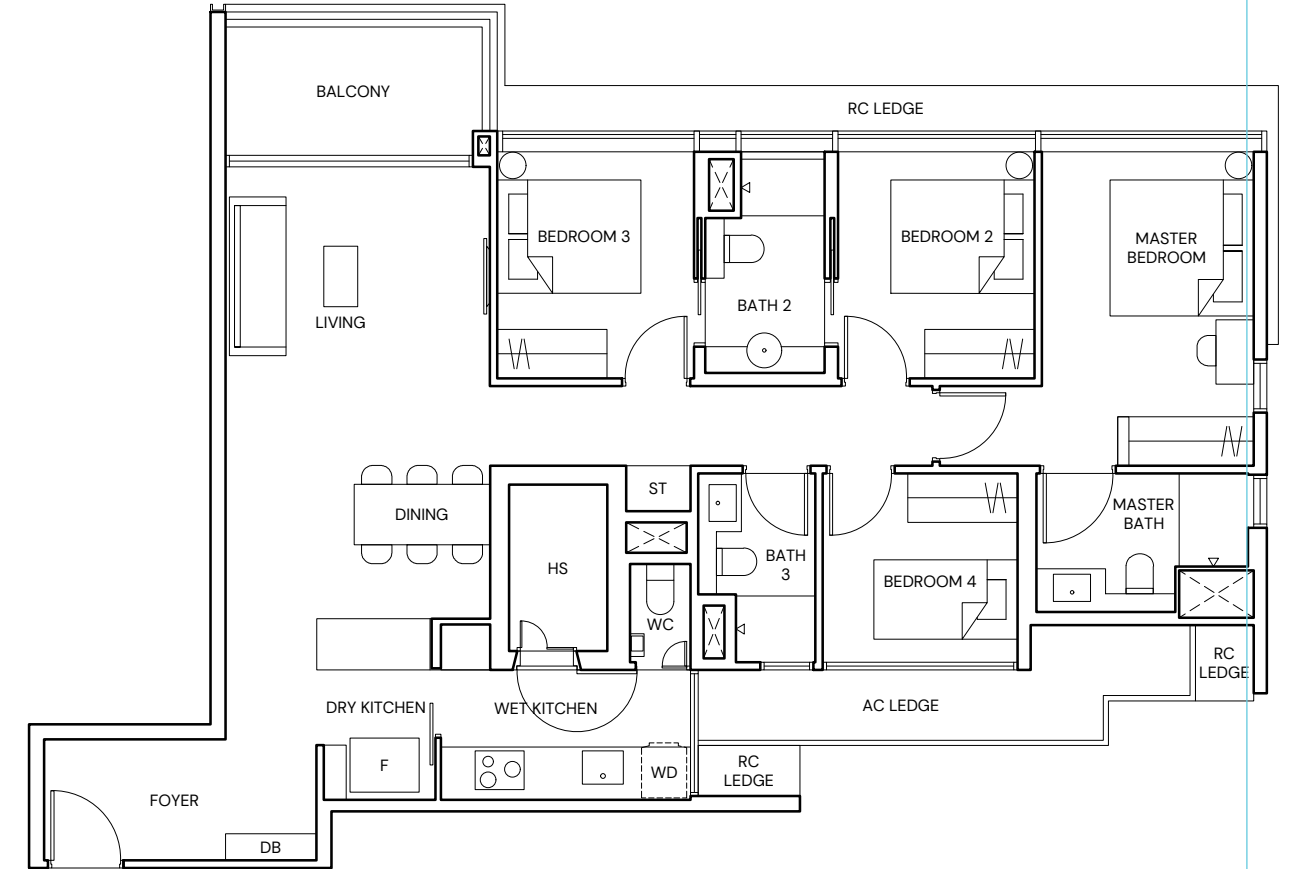
BP-NO--A1716-00007-2021-BP01-DATED 23/12/2022



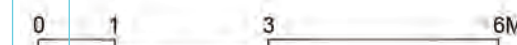
# TYPE D3

**4 BEDROOM**  
124 SQM/ 1335 SQFT

**BLOCK 18B**  
#01-22 TO #04-22

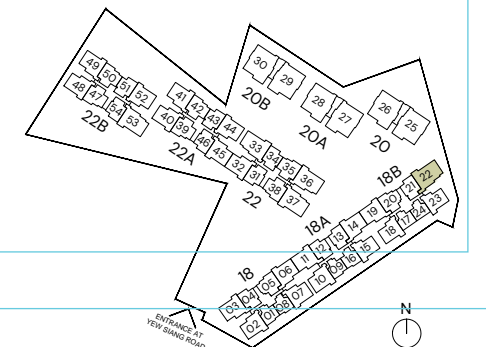


- LEGEND**
- |    |                                               |    |                                                 |
|----|-----------------------------------------------|----|-------------------------------------------------|
| F  | FRIDGE                                        | AC | AIR-CONDITIONER                                 |
| WD | WASHER DRYER COMBO                            | RC | REINFORCED CONCRETE (EXCLUDED FROM STRATA AREA) |
| HS | HOUSEHOLD SHELTER (EXCLUDED FROM STRATA AREA) | ∅  | VOID SPACE (EXCLUDED FROM STRATA AREA)          |
| DB | DISTRIBUTION BOARD                            |    |                                                 |
| ST | STORE                                         |    |                                                 |
| WC | WATER CLOSET                                  |    |                                                 |



ALL PLANS ARE SUBJECT TO CHANGES BY THE RELEVANT AUTHORITIES.  
MEASUREMENTS ARE APPROXIMATE ONLY AND SUBJECT TO FINAL SURVEY.  
INFORMATION ACCURATE AT POINT OF PRINTING.

BP-NO--A1716-00007-2021-BP01-DATED 23/12/2022



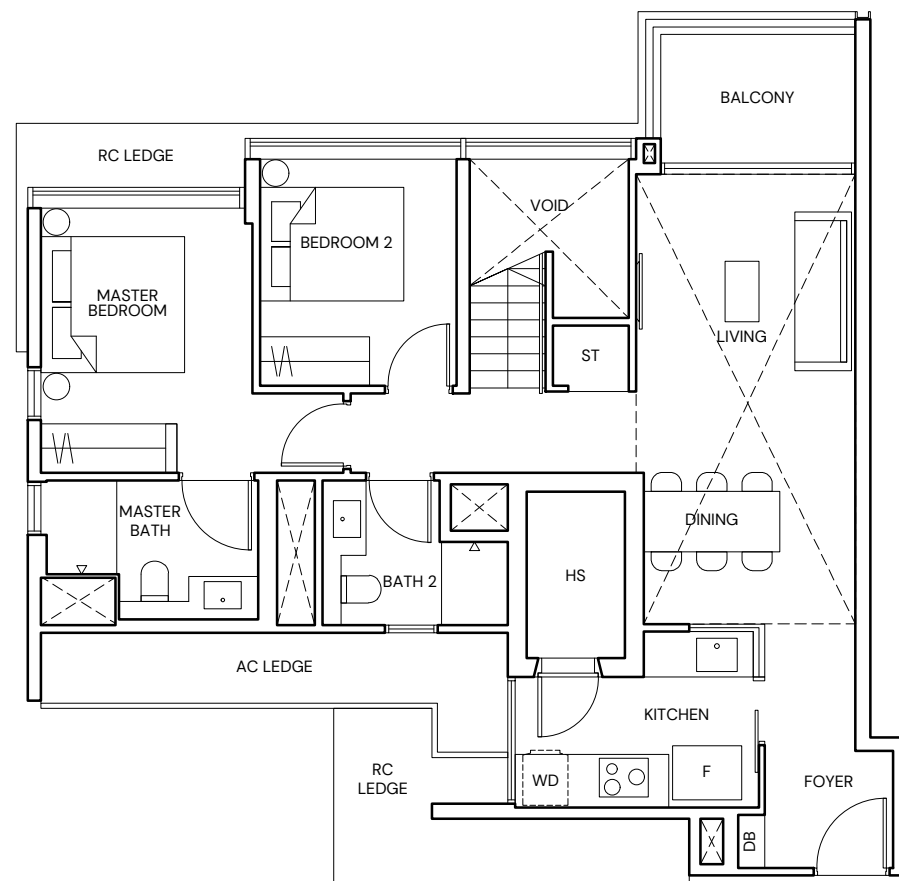
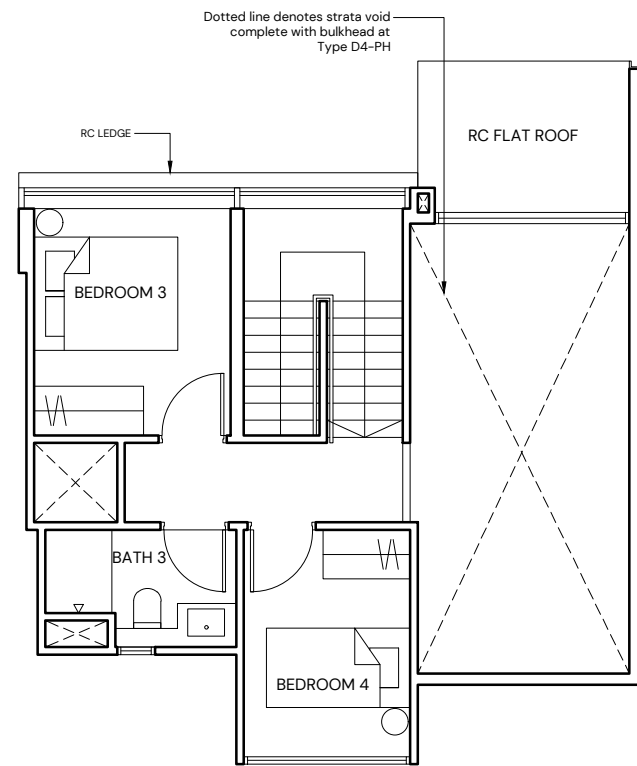


# TYPE D4-PH

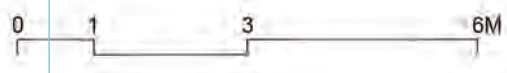
**4 BEDROOM**  
143 SQM/ 1539 SQFT  
(INCLUSIVE OF 26 SQM STRATA VOID)

**BLOCK 18A**  
#05-15

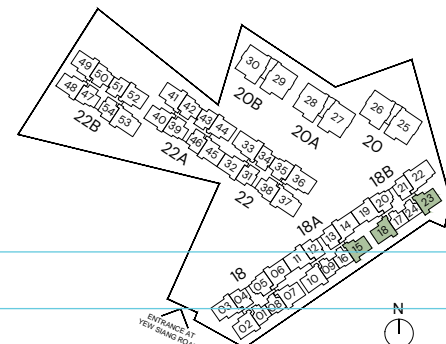
**BLOCK 18B**  
#05-18\*  
#05-23



<b>LEGEND</b>	F FRIDGE	AC AIR-CONDITIONER
WD WASHER DRYER COMBO	RC REINFORCED CONCRETE	(EXCLUDED FROM STRATA AREA)
HS HOUSEHOLD SHELTER	DB DISTRIBUTION BOARD	VOID SPACE
DB DISTRIBUTION BOARD	ST STORE	(EXCLUDED FROM STRATA AREA)
ST STORE	* MIRRORED UNIT	



ALL PLANS ARE SUBJECT TO CHANGES BY THE RELEVANT AUTHORITIES.  
MEASUREMENTS ARE APPROXIMATE ONLY AND SUBJECT TO FINAL SURVEY.  
INFORMATION ACCURATE AT POINT OF PRINTING.  
BP-NO--A1716-00007-2021-BP01-DATED 23/12/2022



# TYPE D5-PH

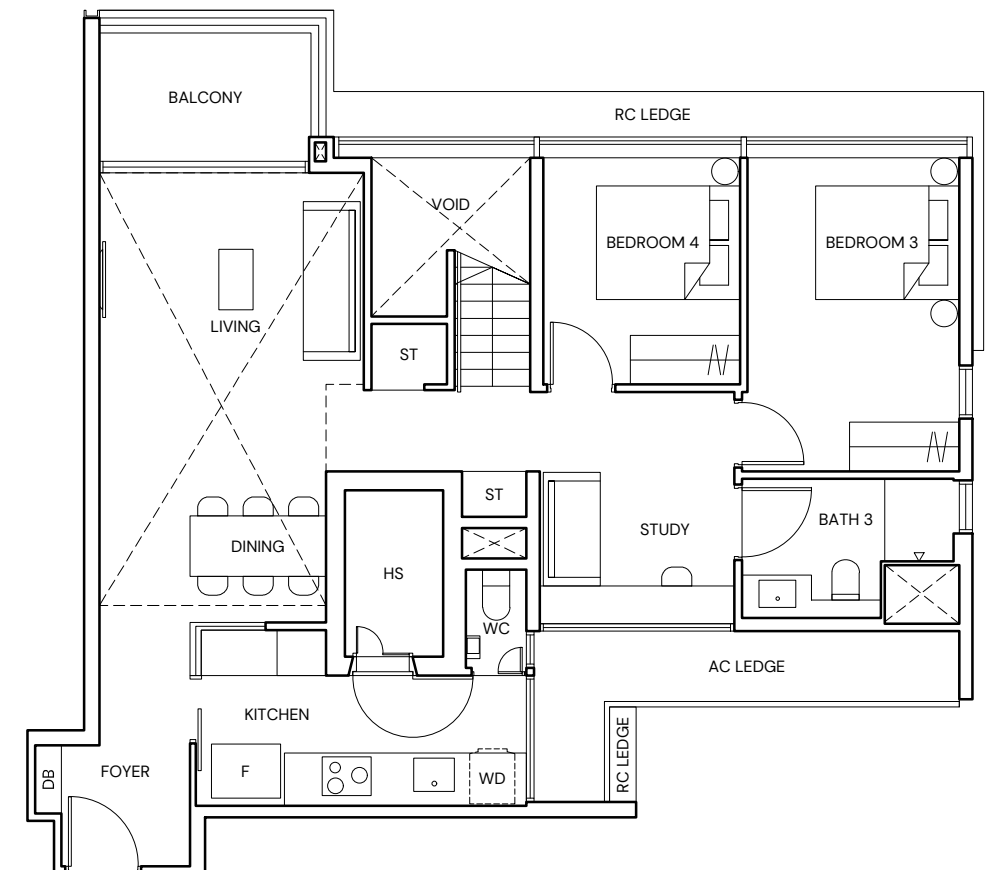
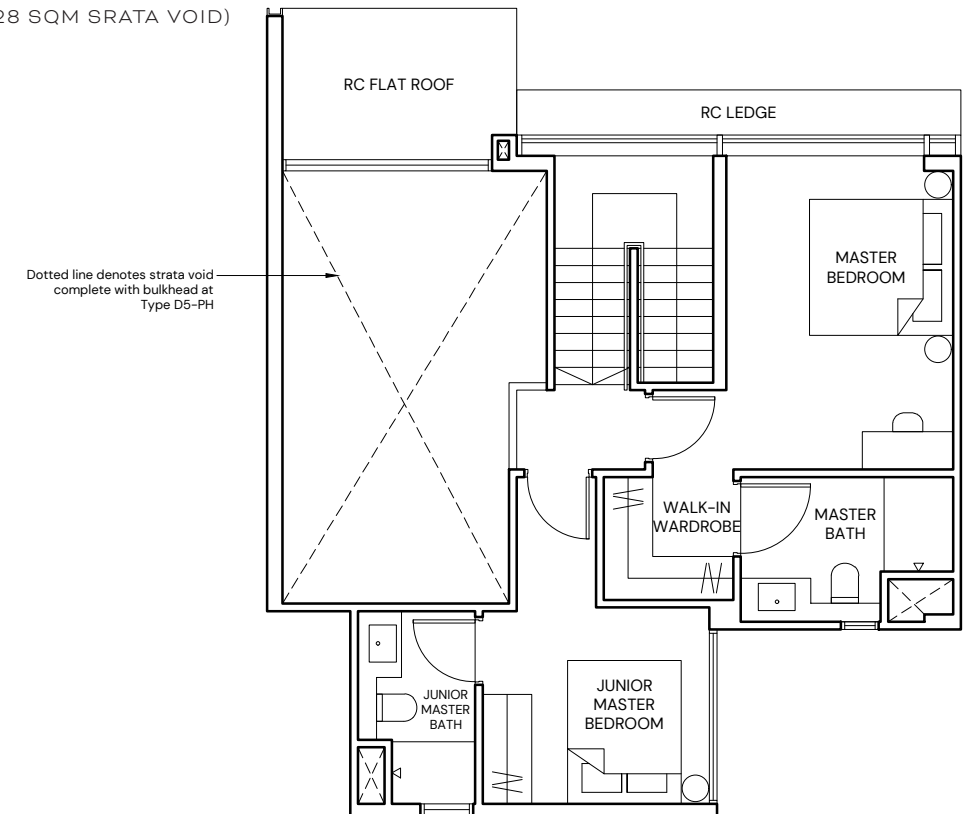
**4 BEDROOM**  
170 SQM/ 1830 SQFT  
(INCLUSIVE OF 28 SQM STRATA VOID)

**BLOCK 18**  
#05-02

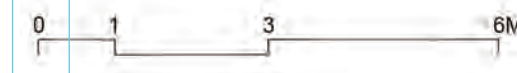
**BLOCK 18A**  
#05-10

**BLOCK 22A**  
#05-44

**BLOCK 22B**  
#05-52



<b>LEGEND</b>	F FRIDGE	AC AIR-CONDITIONER
WD WASHER DRYER COMBO	RC REINFORCED CONCRETE	(EXCLUDED FROM STRATA AREA)
HS HOUSEHOLD SHELTER	DB DISTRIBUTION BOARD	VOID SPACE
DB DISTRIBUTION BOARD	ST STORE	(EXCLUDED FROM STRATA AREA)
ST STORE	WC WATER CLOSET	



ALL PLANS ARE SUBJECT TO CHANGES BY THE RELEVANT AUTHORITIES.  
MEASUREMENTS ARE APPROXIMATE ONLY AND SUBJECT TO FINAL SURVEY.  
INFORMATION ACCURATE AT POINT OF PRINTING.  
BP-NO--A1716-00007-2021-BP01-DATED 23/12/2022





# TYPE D6-PH

**4 BEDROOM**  
172 SQM/ 1851 SQFT  
(INCLUSIVE OF 28 SQM STRATA VOID)

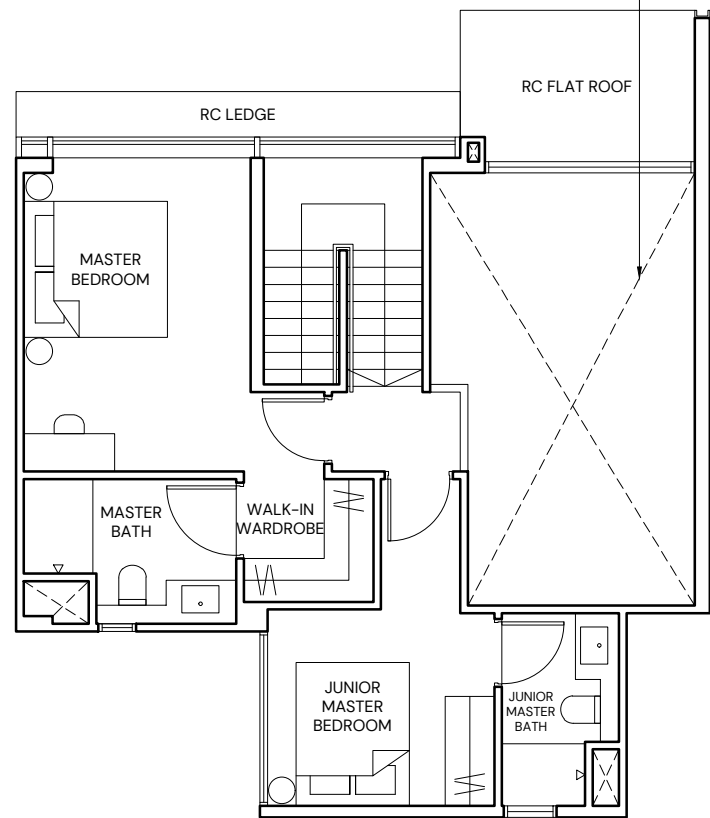
**BLOCK 18**  
#05-07

**BLOCK 22**  
#05-32\*

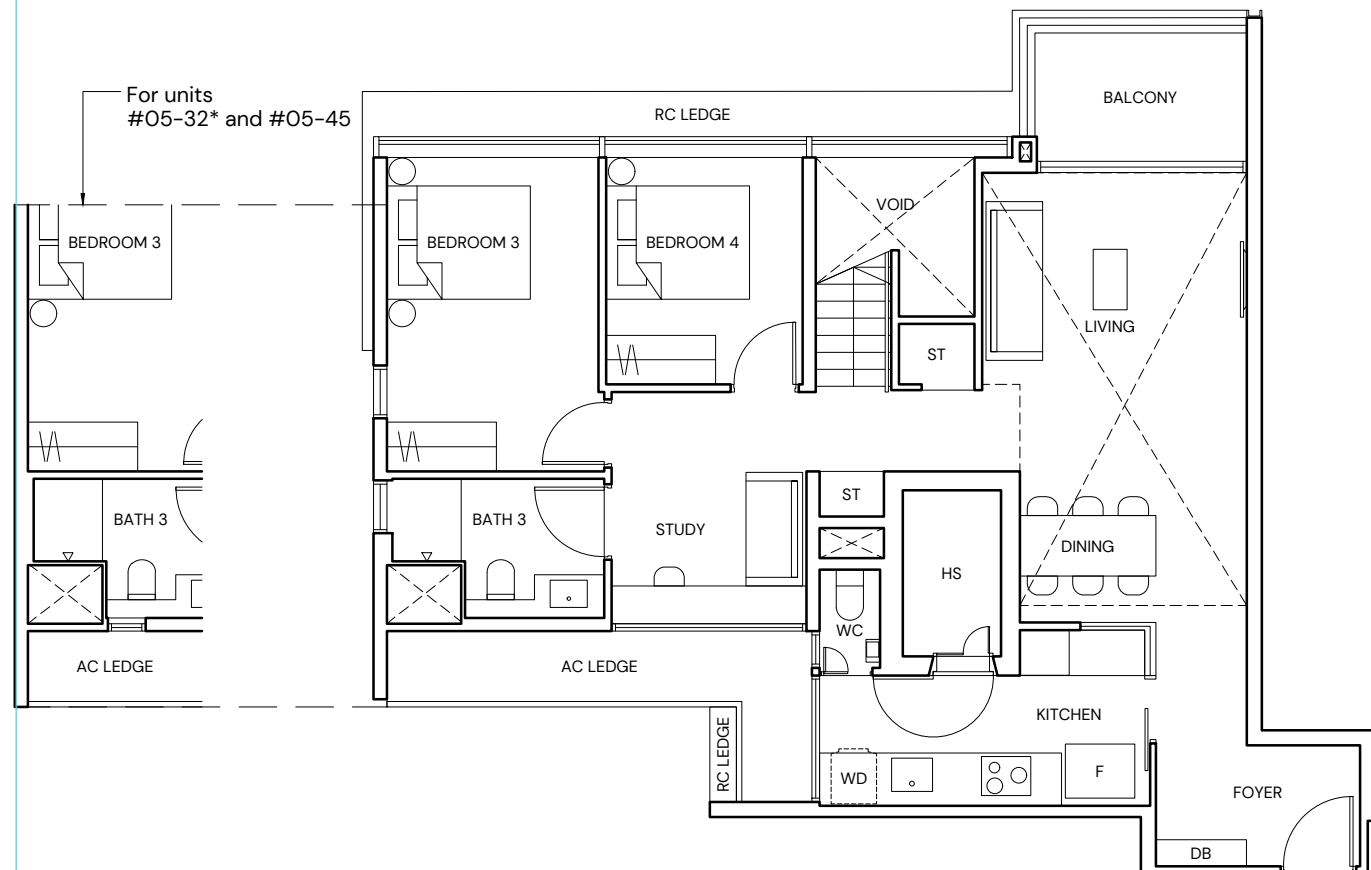
**BLOCK 22A**  
#05-40\*  
#05-41  
#05-45

**BLOCK 22B**  
#05-48\*  
#05-49

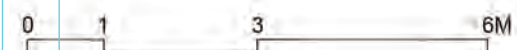
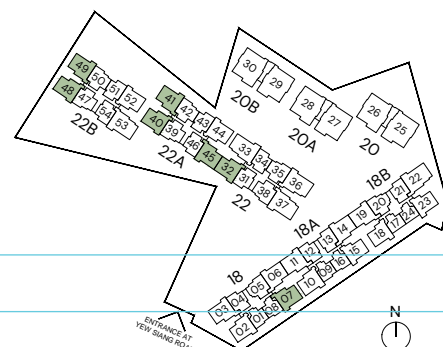
Dotted line denotes strata void complete with bulkhead at Type D6-PH



For units #05-32\* and #05-45



<b>LEGEND</b>	F	FRIDGE	AC	AIR-CONDITIONER
	WD	WASHER DRYER COMBO	RC	REINFORCED CONCRETE (EXCLUDED FROM STRATA AREA)
	HS	HOUSEHOLD SHELTER (EXCLUDED FROM STRATA AREA)	[ ]	VOID SPACE (EXCLUDED FROM STRATA AREA)
	DB	DISTRIBUTION BOARD		
	ST	STORE		
	WC	WATER CLOSET		
	*	MIRRORED UNIT		



ALL PLANS ARE SUBJECT TO CHANGES BY THE RELEVANT AUTHORITIES. MEASUREMENTS ARE APPROXIMATE ONLY AND SUBJECT TO FINAL SURVEY. INFORMATION ACCURATE AT POINT OF PRINTING.  
BP-NO.-A1716-00007-2021-BP01-DATED 23/12/2022

# TYPE D7-PH

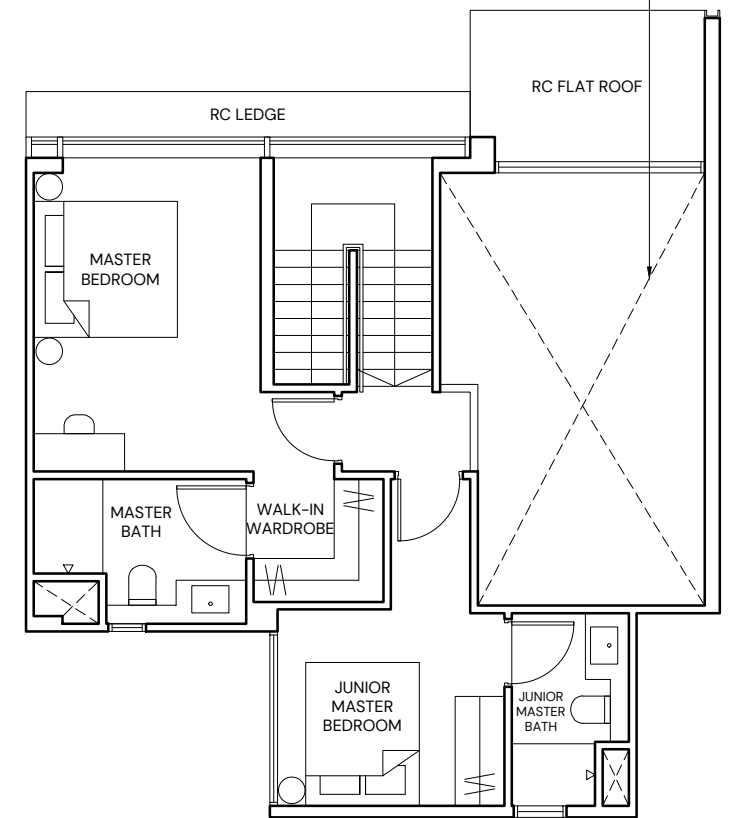
**4 BEDROOM**  
173 SQM/ 1862 SQFT  
(INCLUSIVE OF 28 SQM STRATA VOID)

**BLOCK 18**  
#05-03  
#05-06\*

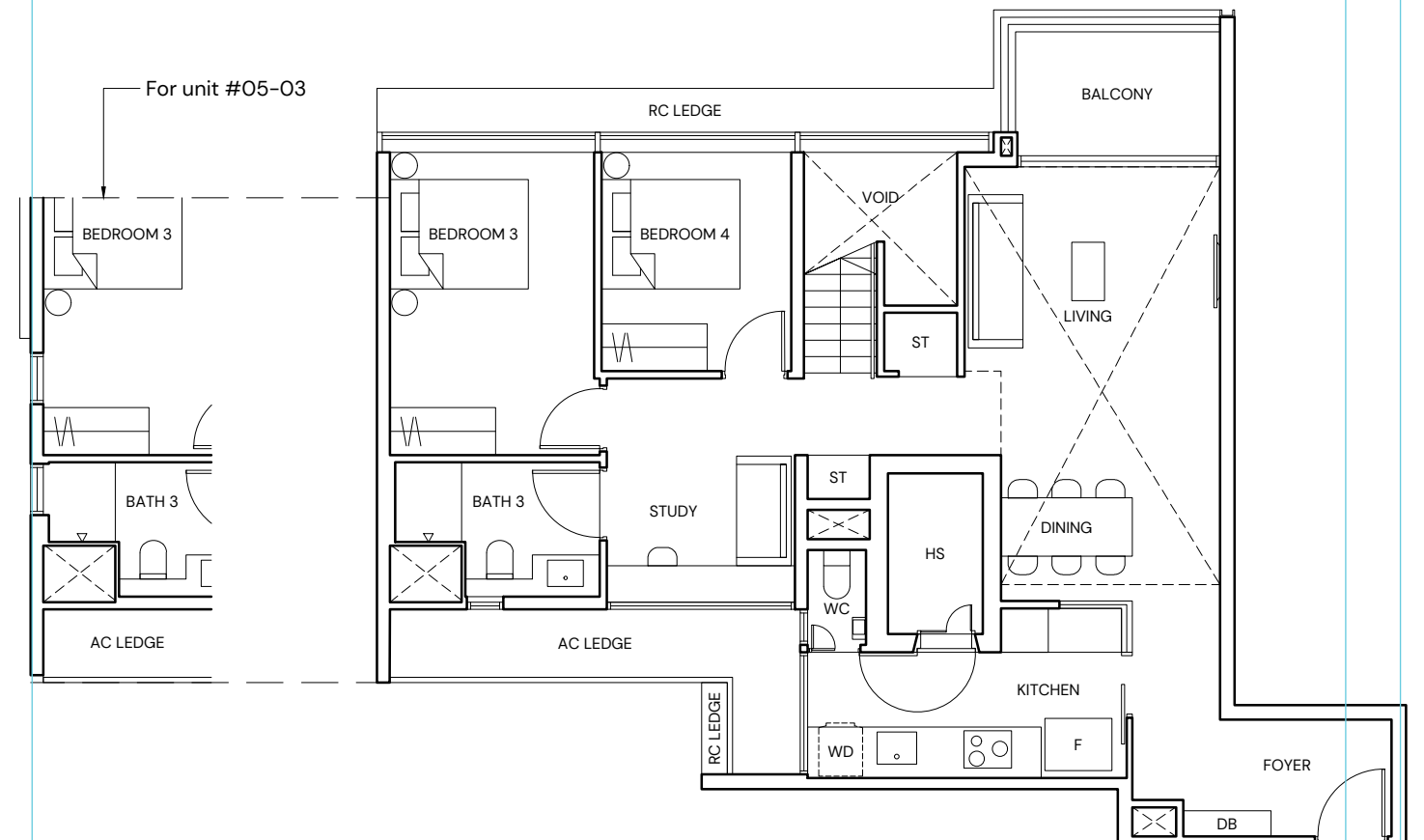
**BLOCK 18A**  
#05-11  
#05-14\*

**BLOCK 18B**  
#05-19

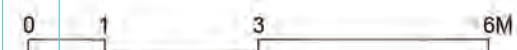
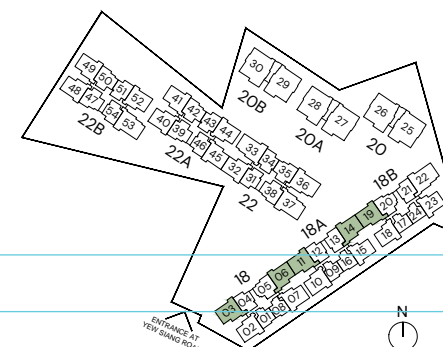
Dotted line denotes strata void complete with bulkhead at Type D7-PH



For unit #05-03



<b>LEGEND</b>	F	FRIDGE	AC	AIR-CONDITIONER
	WD	WASHER DRYER COMBO	RC	REINFORCED CONCRETE (EXCLUDED FROM STRATA AREA)
	HS	HOUSEHOLD SHELTER (EXCLUDED FROM STRATA AREA)	[ ]	VOID SPACE (EXCLUDED FROM STRATA AREA)
	DB	DISTRIBUTION BOARD		
	ST	STORE		
	WC	WATER CLOSET		
	*	MIRRORED UNIT		

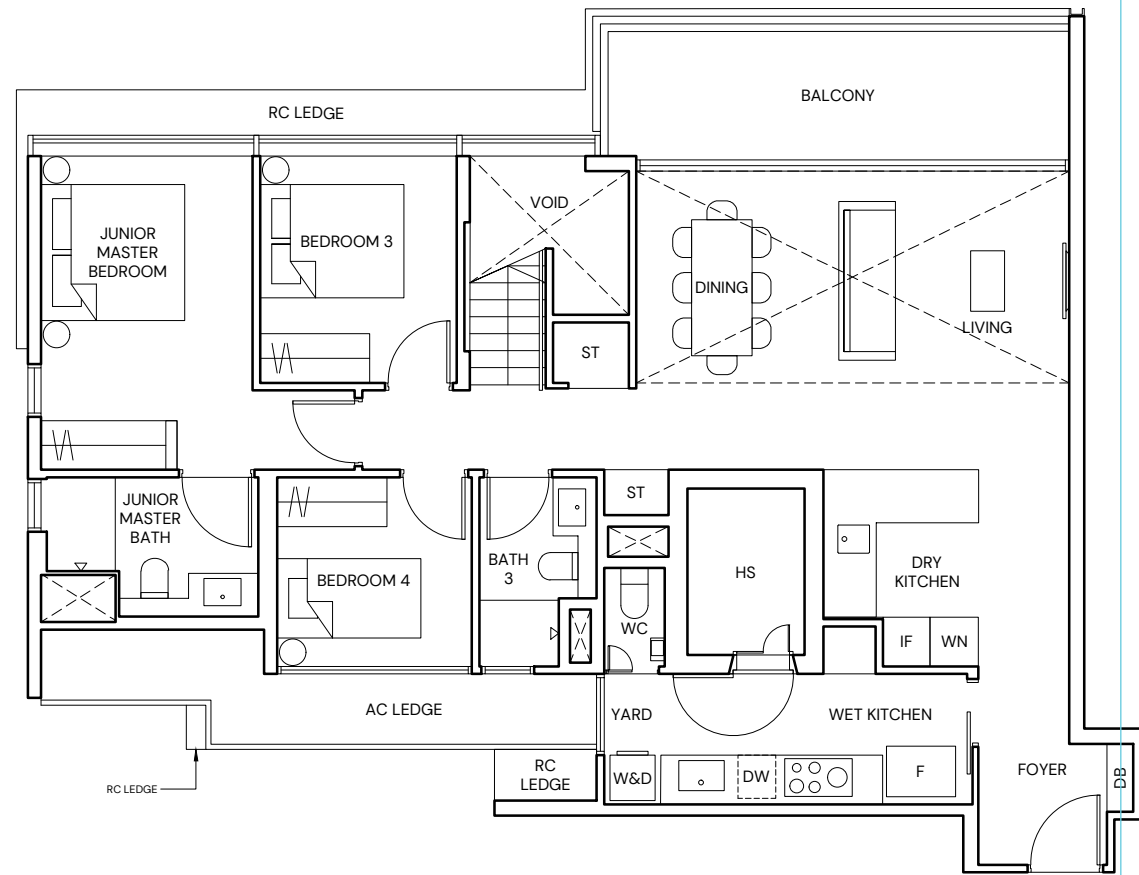
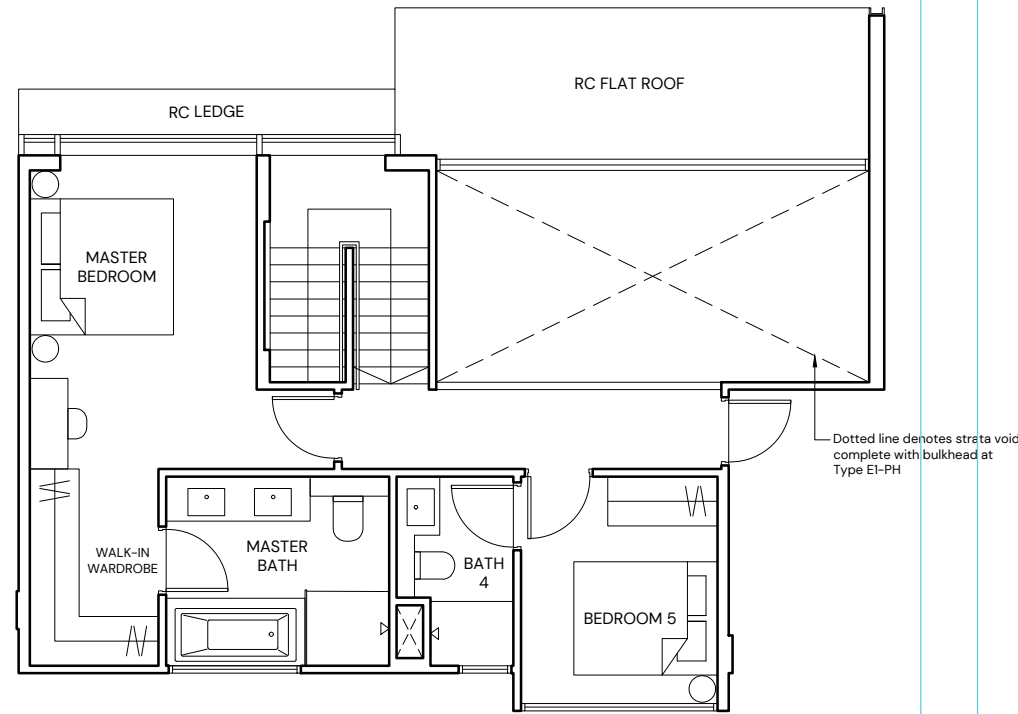


ALL PLANS ARE SUBJECT TO CHANGES BY THE RELEVANT AUTHORITIES. MEASUREMENTS ARE APPROXIMATE ONLY AND SUBJECT TO FINAL SURVEY. INFORMATION ACCURATE AT POINT OF PRINTING.  
BP-NO.-A1716-00007-2021-BP01-DATED 23/12/2022

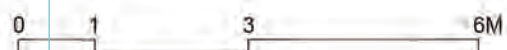
# TYPE E1-PH

**5 BEDROOM**  
197 SQM/ 2120 SQFT  
(INCLUSIVE OF 25 SQM STRATA VOID)

**BLOCK 22**  
#05-33

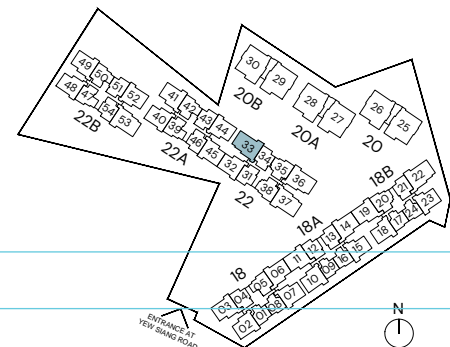


- LEGEND**
- |     |                    |    |                                                    |
|-----|--------------------|----|----------------------------------------------------|
| F   | FRIDGE             | AC | AIR-CONDITIONER                                    |
| IF  | INTEGRATED FRIDGE  | RC | REINFORCED CONCRETE<br>(EXCLUDED FROM STRATA AREA) |
| DW  | DISHWASHER         | ◻  | VOID SPACE<br>(EXCLUDED FROM STRATA AREA)          |
| WN  | WINE CHILLER       |    |                                                    |
| W&D | WASHER AND DRYER   |    |                                                    |
| HS  | HOUSEHOLD SHELTER  |    |                                                    |
| DB  | DISTRIBUTION BOARD |    |                                                    |
| ST  | STORE              |    |                                                    |
| WC  | WATER CLOSET       |    |                                                    |



ALL PLANS ARE SUBJECT TO CHANGES BY THE RELEVANT AUTHORITIES.  
MEASUREMENTS ARE APPROXIMATE ONLY AND SUBJECT TO FINAL SURVEY.  
INFORMATION ACCURATE AT POINT OF PRINTING.

BP-NO--A1716-00007-2021-BP01-DATED 23/12/2022

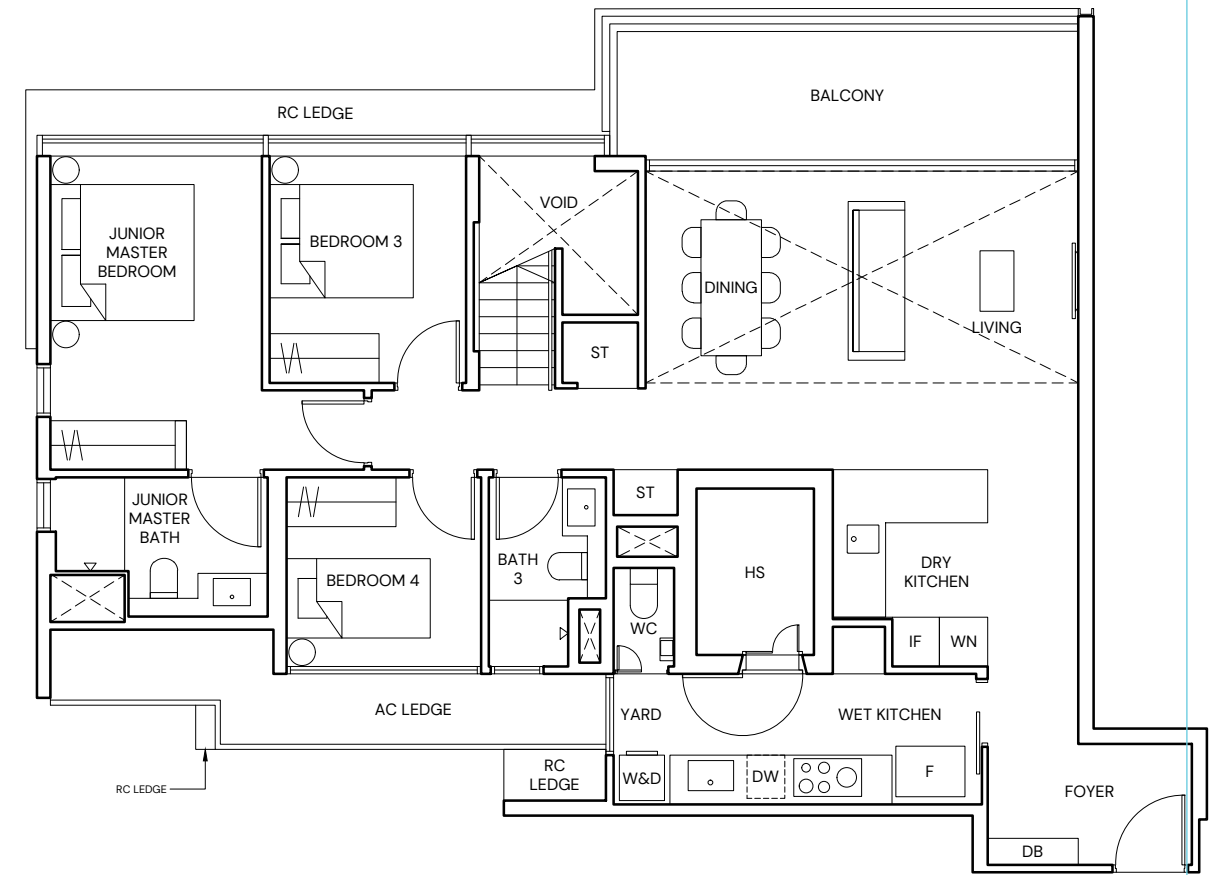
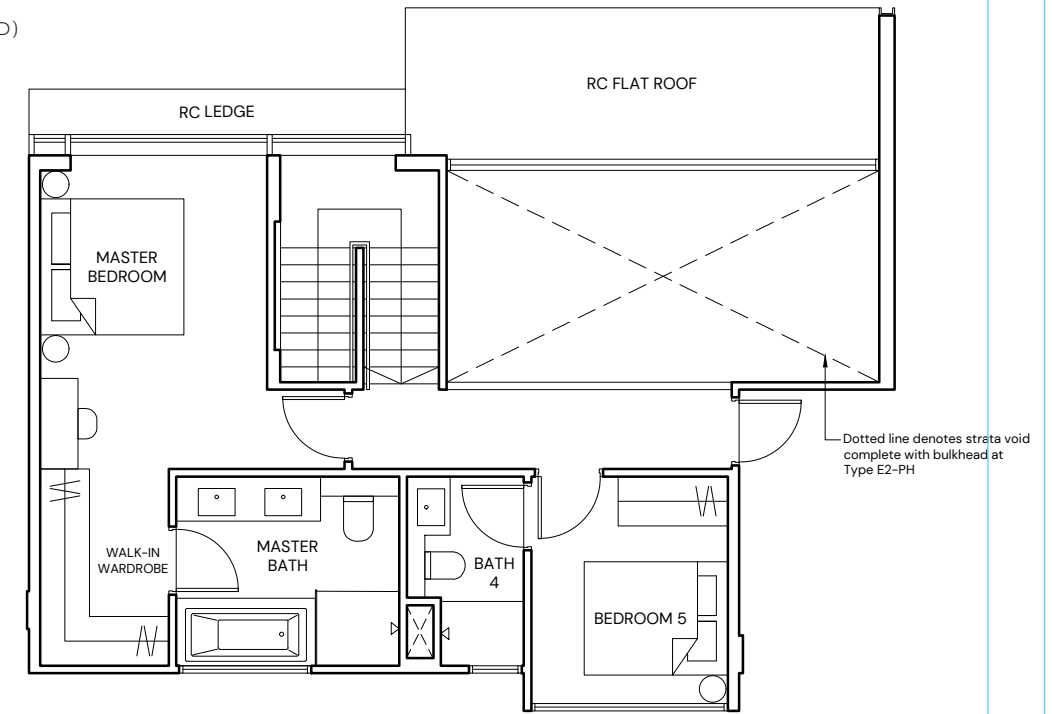


# TYPE E2-PH

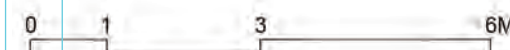
**5 BEDROOM**  
199 SQM/ 2142 SQFT  
(INCLUSIVE OF 25 SQM STRATA VOID)

**BLOCK 22**  
#05-36\*  
#05-37

**BLOCK 22B**  
#05-53

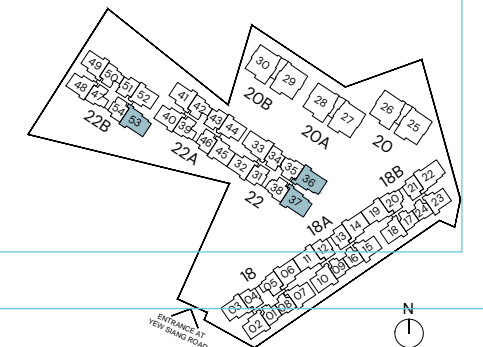


- LEGEND**
- |     |                    |    |                                                    |
|-----|--------------------|----|----------------------------------------------------|
| F   | FRIDGE             | AC | AIR-CONDITIONER                                    |
| IF  | INTEGRATED FRIDGE  | RC | REINFORCED CONCRETE<br>(EXCLUDED FROM STRATA AREA) |
| DW  | DISHWASHER         | ◻  | VOID SPACE<br>(EXCLUDED FROM STRATA AREA)          |
| WN  | WINE CHILLER       |    |                                                    |
| W&D | WASHER AND DRYER   |    |                                                    |
| HS  | HOUSEHOLD SHELTER  |    |                                                    |
| DB  | DISTRIBUTION BOARD |    |                                                    |
| ST  | STORE              |    |                                                    |
| WC  | WATER CLOSET       |    |                                                    |
| *   | MIRRORED UNIT      |    |                                                    |



ALL PLANS ARE SUBJECT TO CHANGES BY THE RELEVANT AUTHORITIES.  
MEASUREMENTS ARE APPROXIMATE ONLY AND SUBJECT TO FINAL SURVEY.  
INFORMATION ACCURATE AT POINT OF PRINTING.

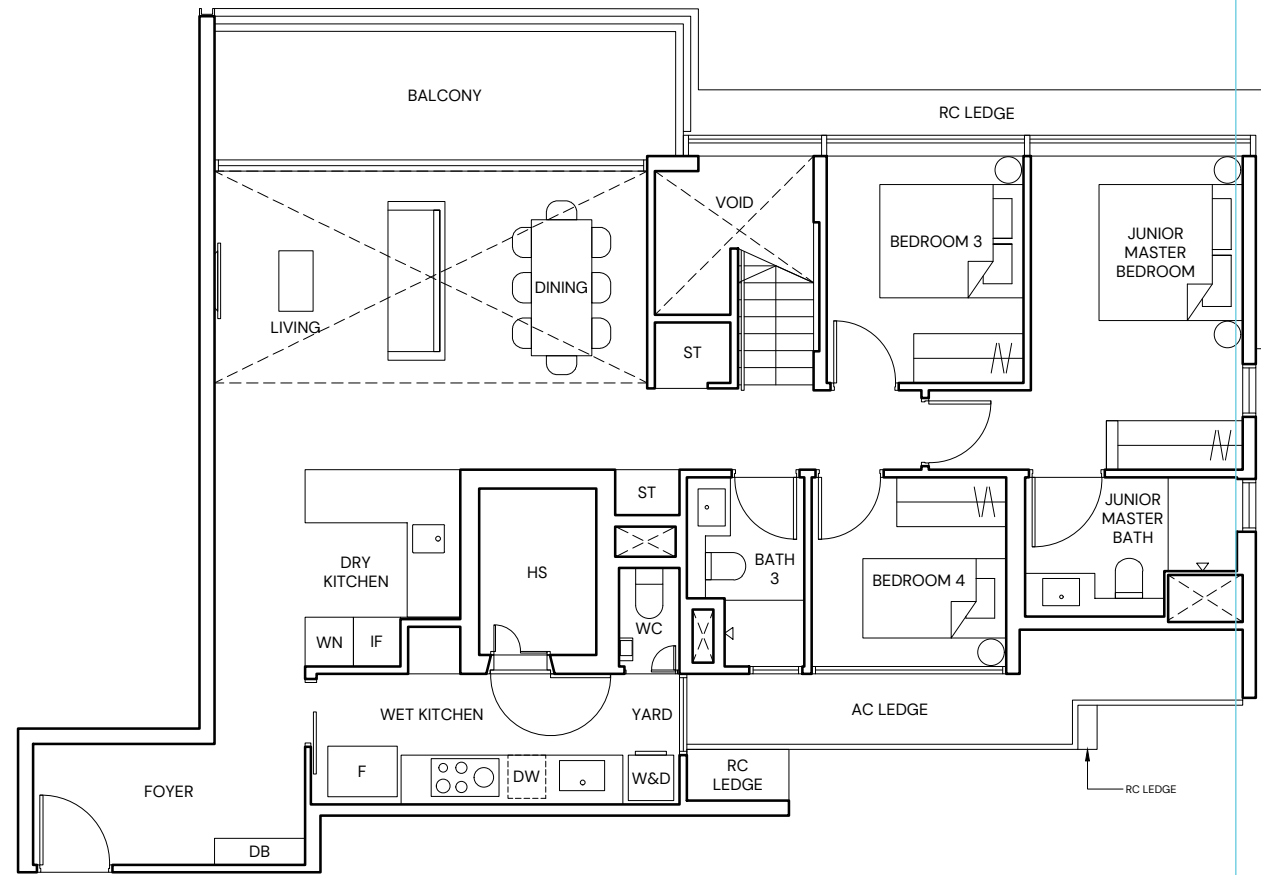
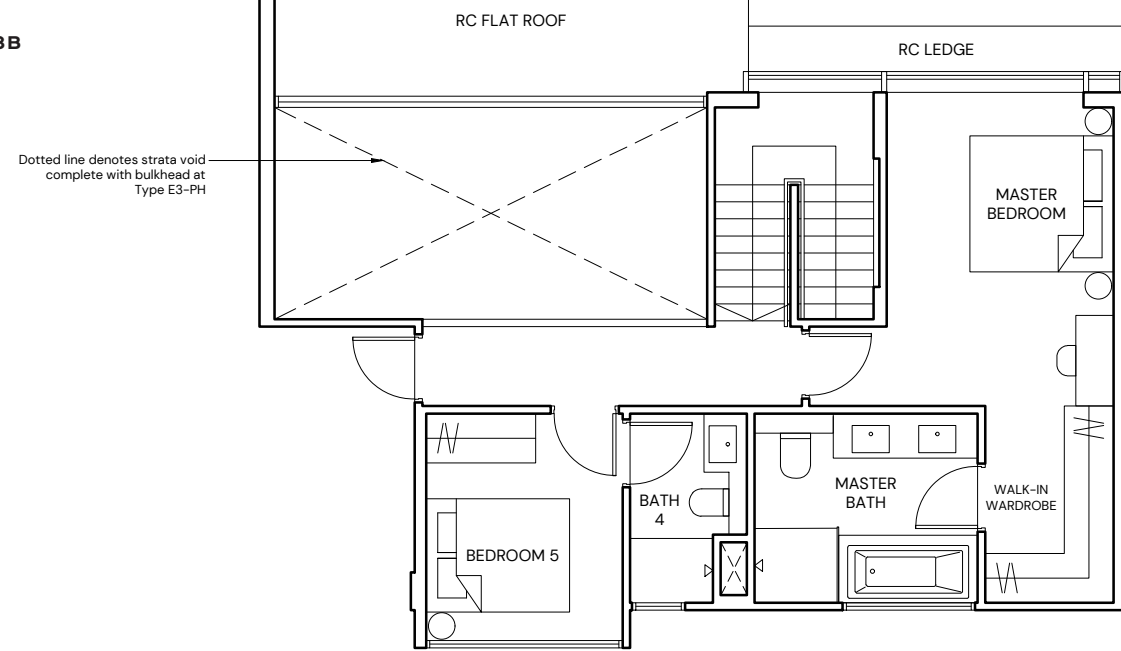
BP-NO--A1716-00007-2021-BP01-DATED 23/12/2022



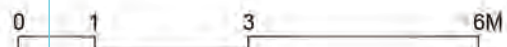
# TYPE E3-PH

**5 BEDROOM**  
201 SQM/ 2164 SQFT  
(INCLUSIVE OF 25 SQM  
STRATA VOID)

**BLOCK 18B**  
#05-22

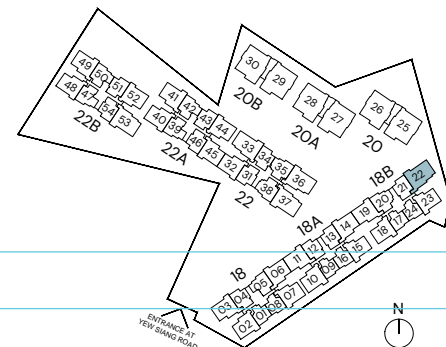


LEGEND			
F	FRIDGE	AC	AIR-CONDITIONER
IF	INTEGRATED FRIDGE	RC	REINFORCED CONCRETE (EXCLUDED FROM STRATA AREA)
DW	DISHWASHER	∅	VOID SPACE (EXCLUDED FROM STRATA AREA)
WN	WINE CHILLER		
W&D	WASHER AND DRYER		
HS	HOUSEHOLD SHELTER		
DB	DISTRIBUTION BOARD		
ST	STORE		
WC	WATER CLOSET		

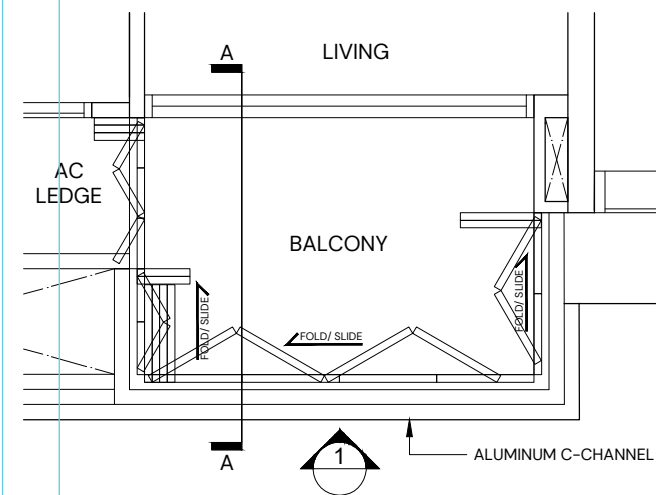


ALL PLANS ARE SUBJECT TO CHANGES BY THE RELEVANT AUTHORITIES.  
MEASUREMENTS ARE APPROXIMATE ONLY AND SUBJECT TO FINAL SURVEY.  
INFORMATION ACCURATE AT POINT OF PRINTING.

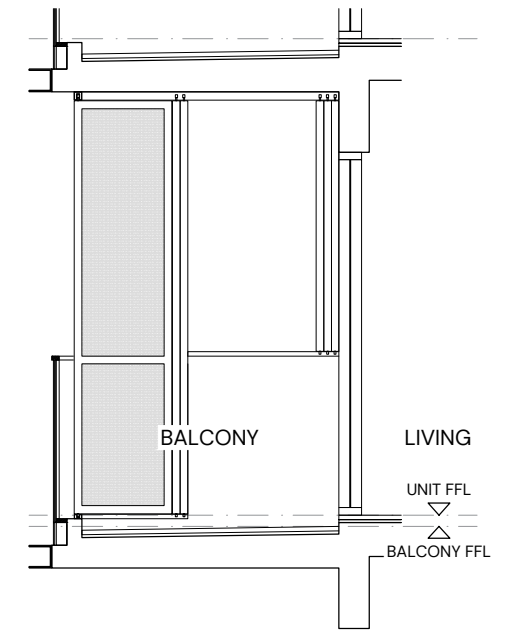
BP-NO-A1716-00007-2021-BP01-DATED 23/12/2022



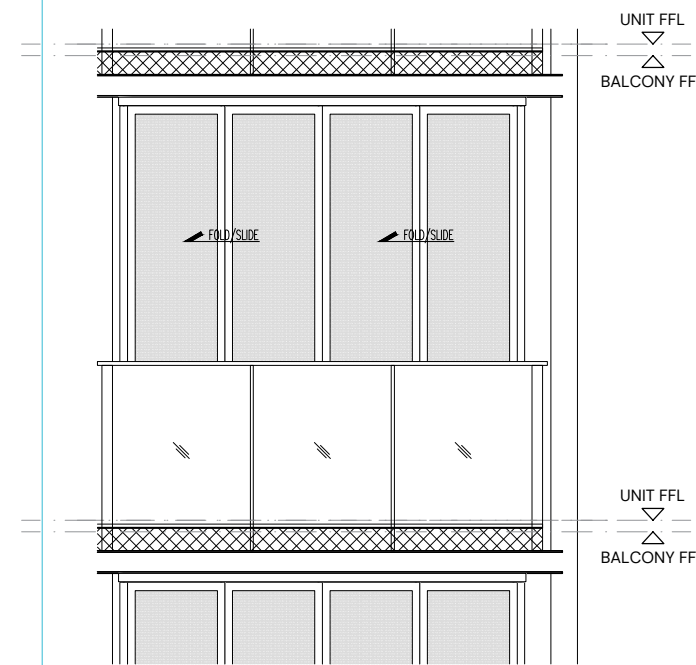
# APPROVED BALCONY CHART



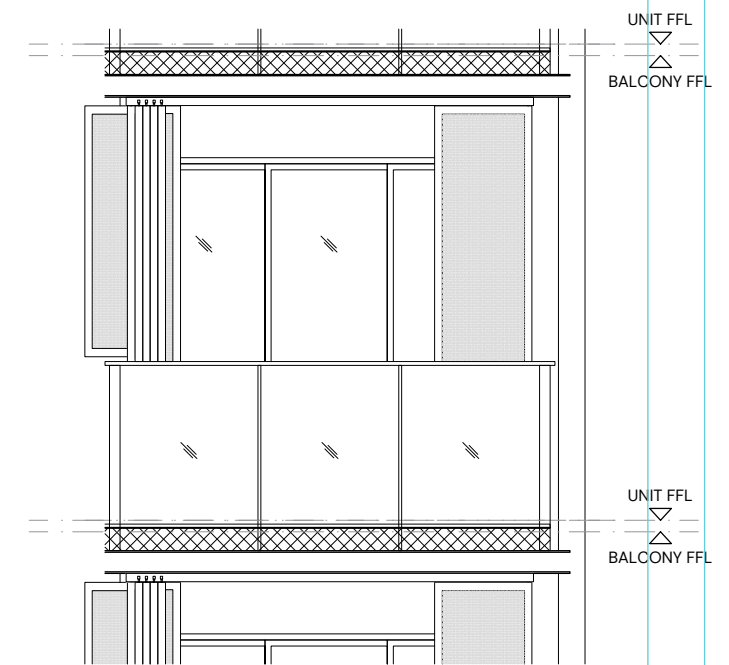
TYPICAL RETRACTABLE BALCONY SCREEN PLAN



TYPICAL BALCONY SCREEN SECTION



TYPICAL RETRACTABLE BALCONY SCREEN ELEVATION (FULLY DRAWN)



TYPICAL RETRACTABLE BALCONY SCREEN ELEVATION (FULLY RETRACTED)

## NOTES:

1. Aluminum louver sliding folding screen is not provided for this development (unless otherwise stated).
2. The balcony shall not be enclosed unless the screen is approved by the relevant authorities.
3. Final selection of material, colour and detailing of the screen is subject to MCST approval.
4. Approval from MCST is required before installation.
5. Owner to engage the developer's appointed contractor and/ or their own contractor to install the screen.
6. All installation fees to be borne by the owner.
7. Measurements are approximate only and subject to final survey.

